



Bruce Whitelaw

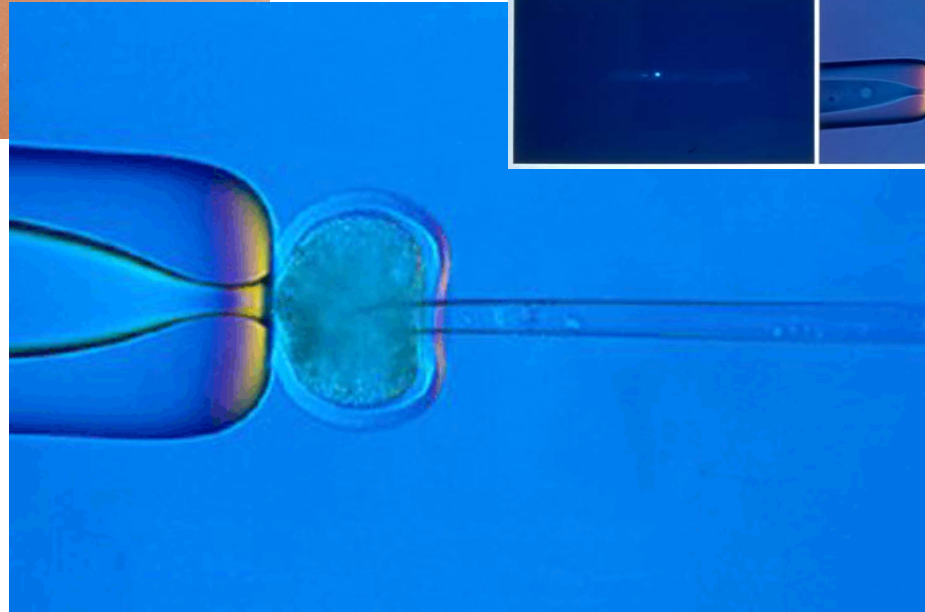
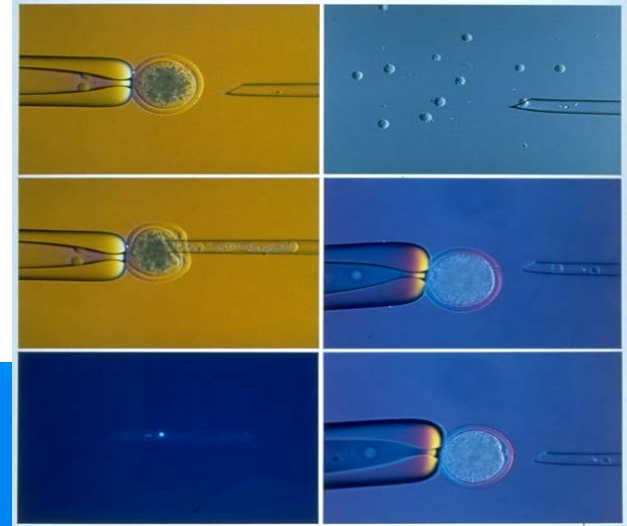
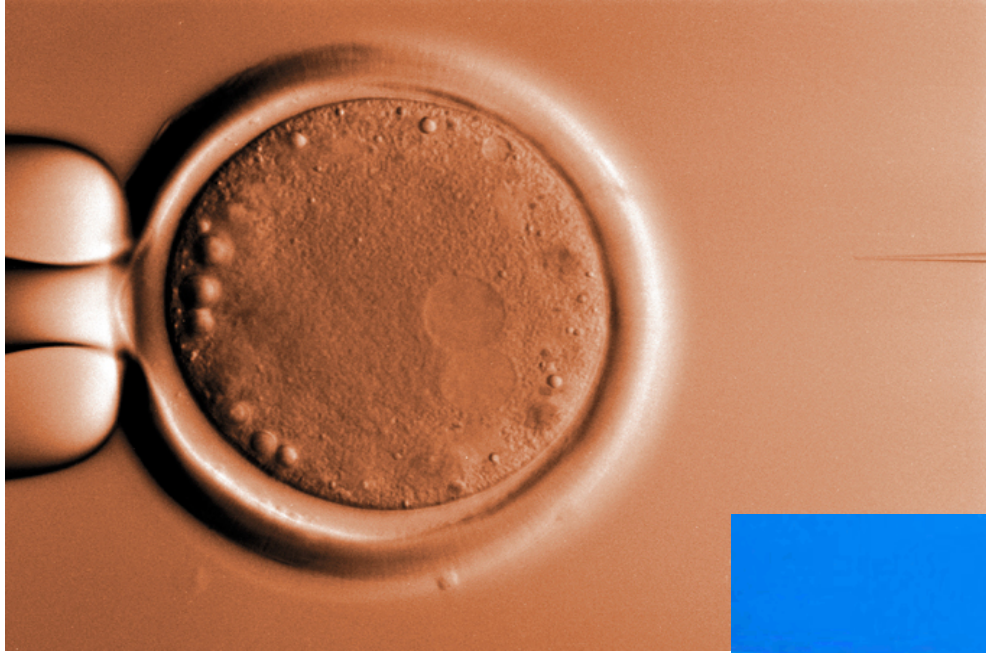
**Genetically engineered livestock
- can contribute to future farming**

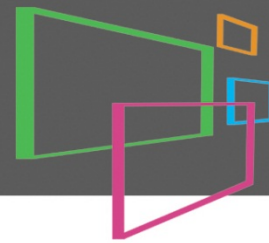


EAAP, Nantes, Wednesday 28th August 2013

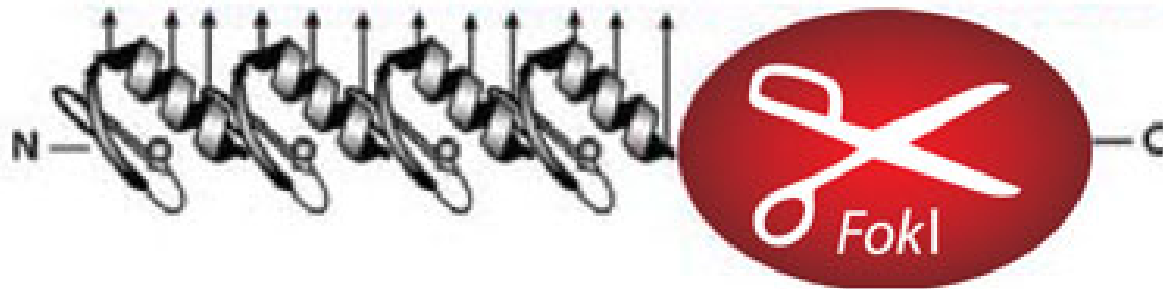
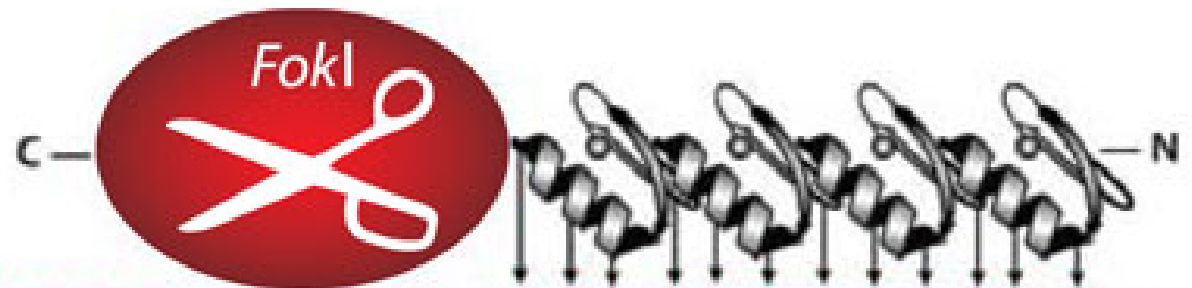


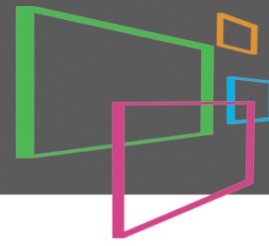






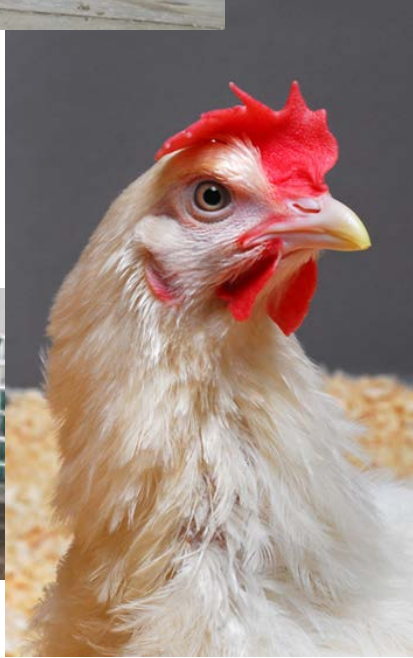
ROSLIN





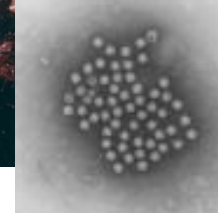
ROSLIN





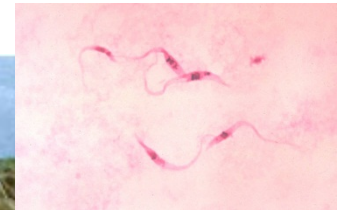


FMDV



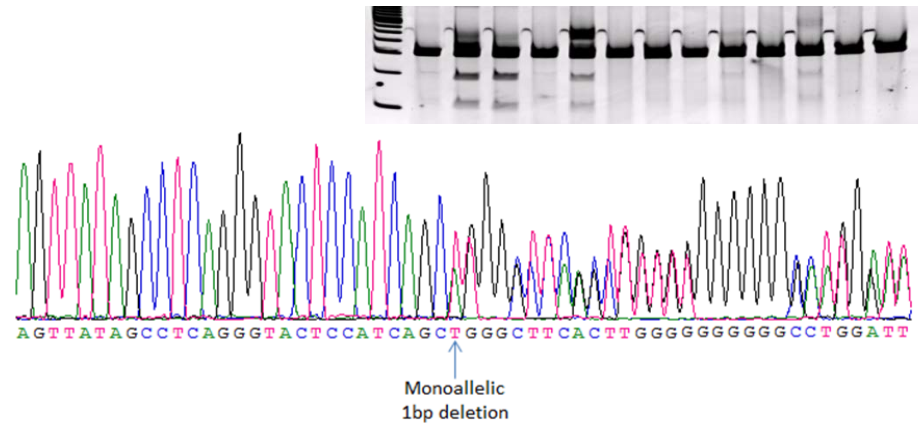
PRRSV

Flu



Trypanosomiasis

'Pig 26' - single-base deletion



AGTTATAGCCTCAGGGTACTCCATCAGCATGGGCTCAGCTGTGTGGGGGGGCA (wt)
 AGTTATAGCCTCAGGGTACTCCATCAGC-TGGGCTCAGCTGTGTGGGGGGGCA (1 del)

“footprintless”