

Bild 1

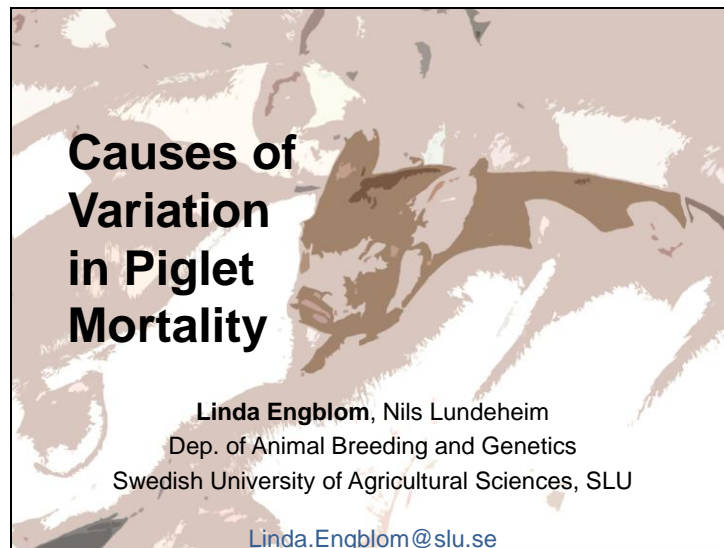


Bild 2

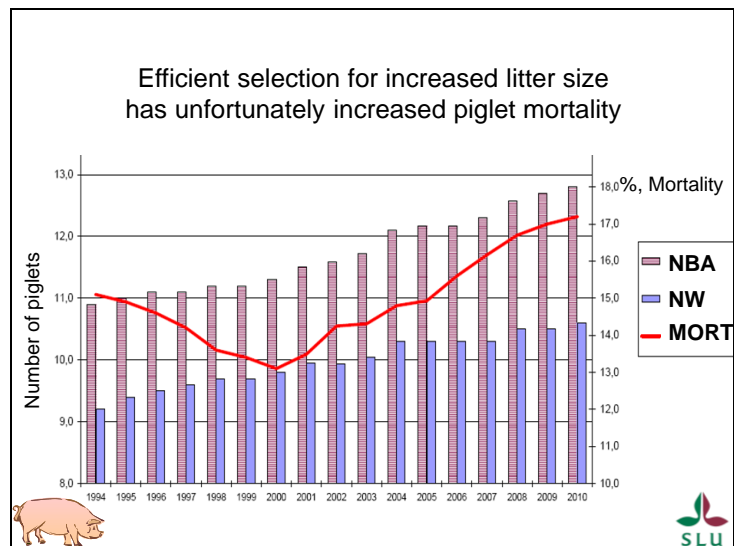


Bild 3

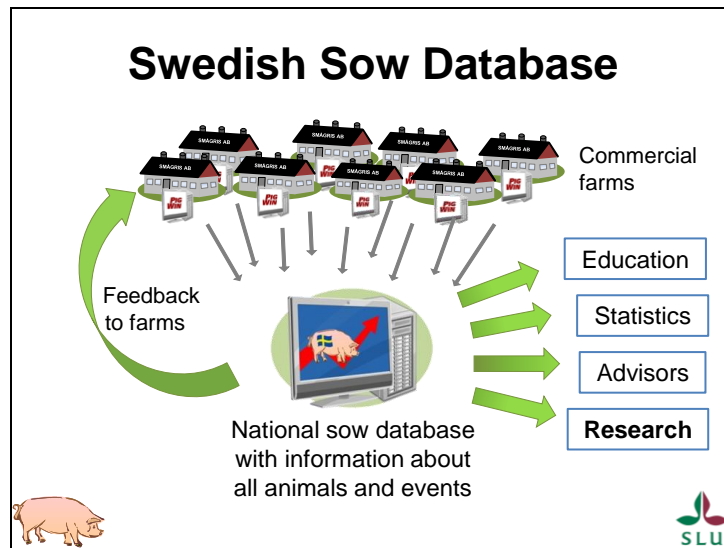


Bild 4

### Analysed Data

- 20 commercial piglet farms in the southern part of Sweden, data from 2009 to 2011
- Final data set included 49,671 farrowings (18,164 crossbred L\*Y sows)
- Loss of piglets:
  - before birth, **stillborn (SB)**
  - proportion of the live born piglets until weaning, **mortality during lactation (LMORT)**

The SLU logo is in the bottom right corner.

Bild 5

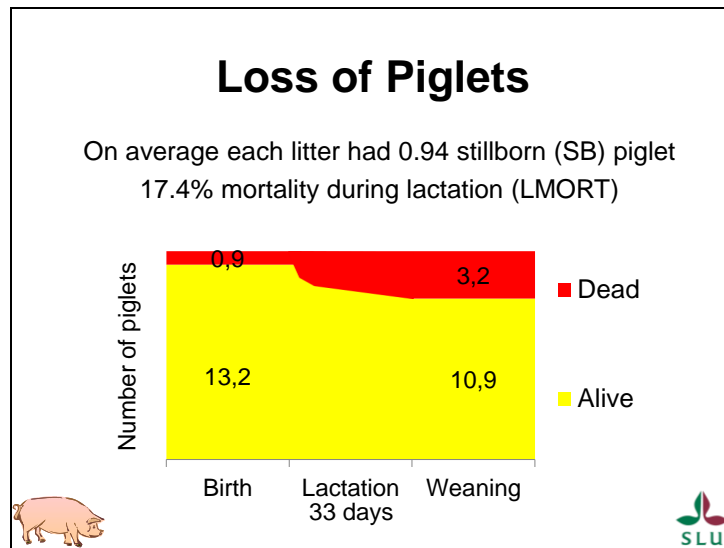


Bild 6

### Statistical Analyses

**MIXED**, Sow repeated, HYS random, fixed effects classified

■ Stillborn (SB)	◆ Lact. Mort (LMORT)
<ul style="list-style-type: none"> <li>■ Farm ***</li> <li>■ Parity ***</li> <li>■ Length of gestation ***</li> <li>■ Total number born ***</li> <li>■ Year n.s.</li> <li>■ Season n.s.</li> </ul>	<ul style="list-style-type: none"> <li>■ Farm ***</li> <li>■ Parity ***</li> <li>■ Length of gestation ***</li> <li>■ Number born alive ***</li> <li>■ Length of lactation ***</li> <li>■ Cross fostering ***</li> <li>■ Season *</li> <li>■ Year n.s.</li> </ul>






Bild 7

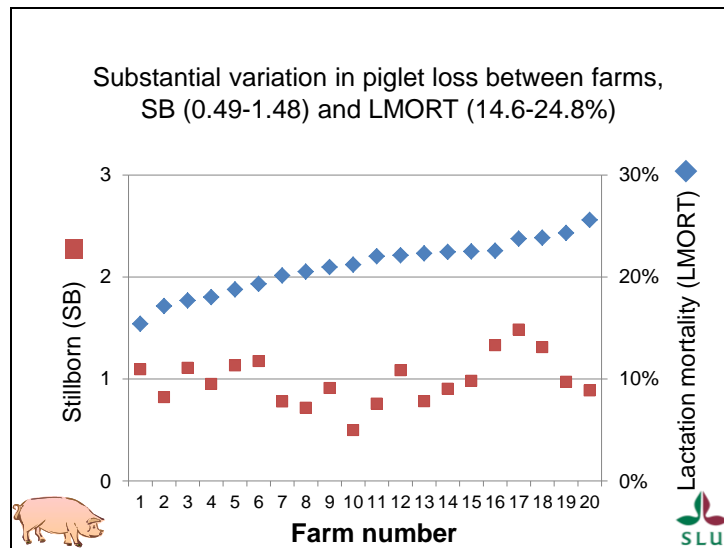


Bild 8

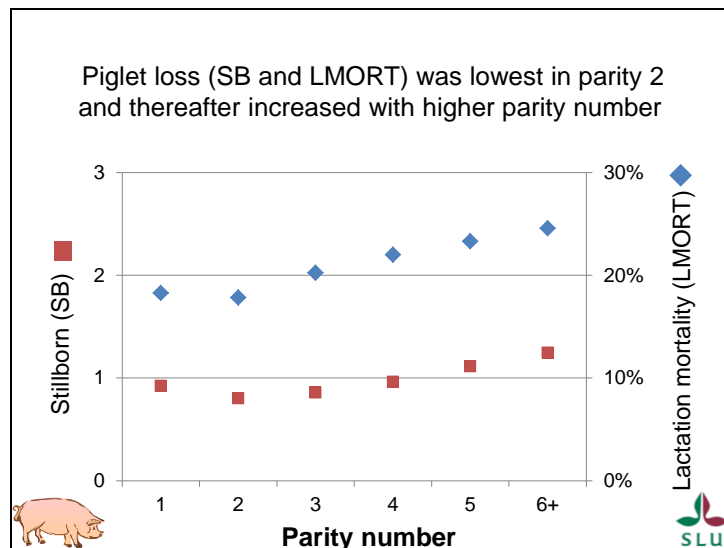


Bild 9

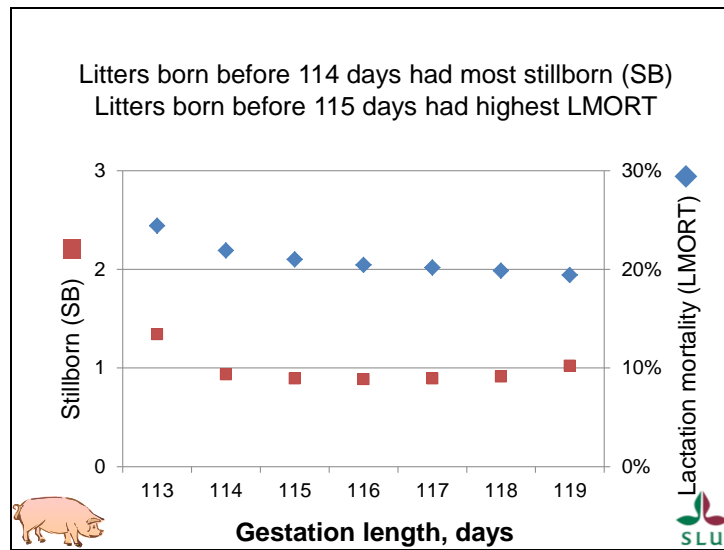


Bild 10

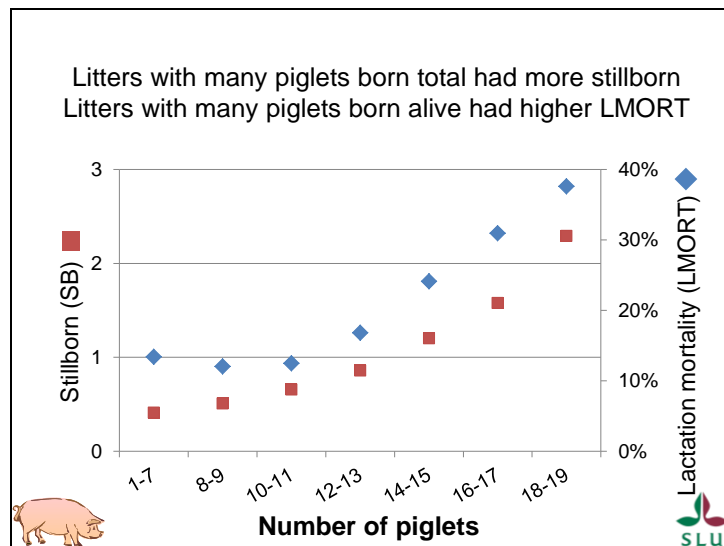


Bild 11

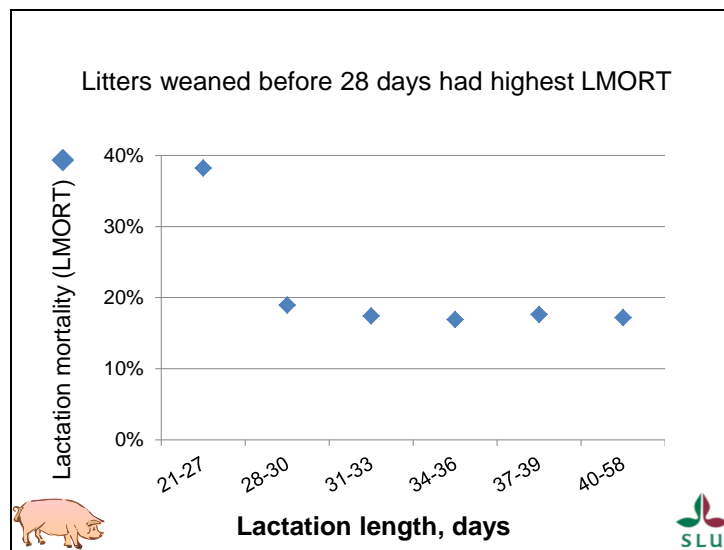


Bild 12

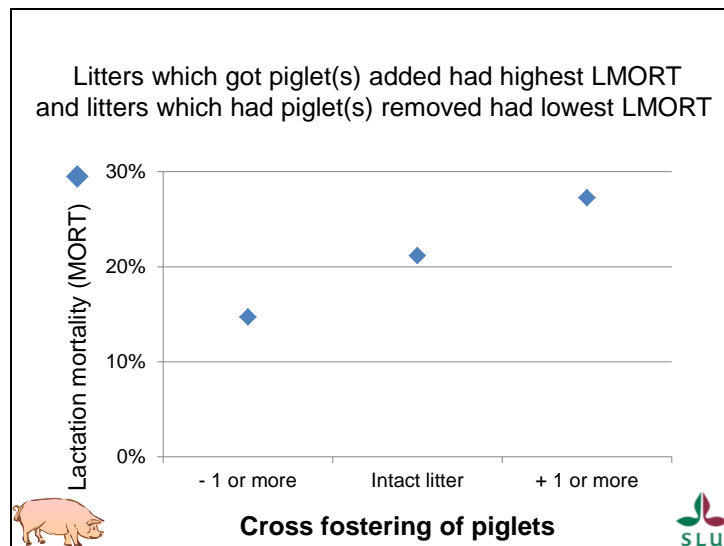


Bild 13

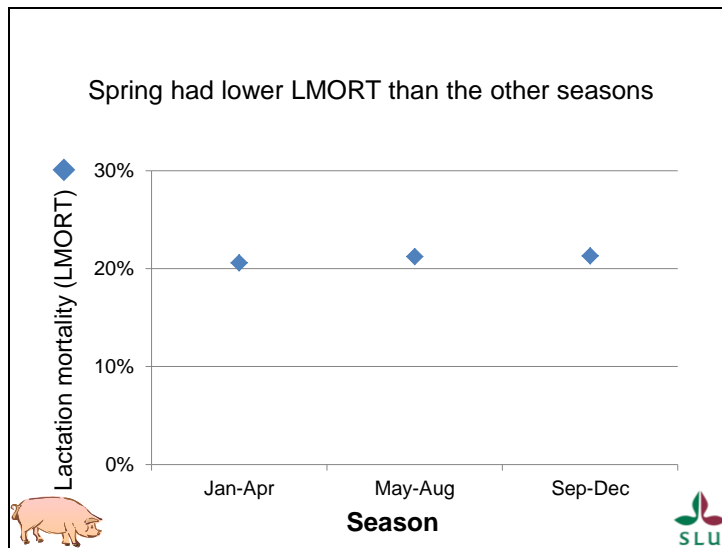


Bild 14

## Take Home Message

- Substantial variation between farms in loss of piglets, both SB and LMORT
  - Exploration of management differences between farms can find superior management to reduce piglet loss
- Interesting variation in piglet loss for different length of gestation
- High mortality litters with few live piglets got more piglets added and/or was weaned early, but is that all there is to it?

SLU

Linda.Engblom@slu.se