

Morphogenetic characterization and germplasm cryopreservation of Churra Tensina, an endangered local ovine breed

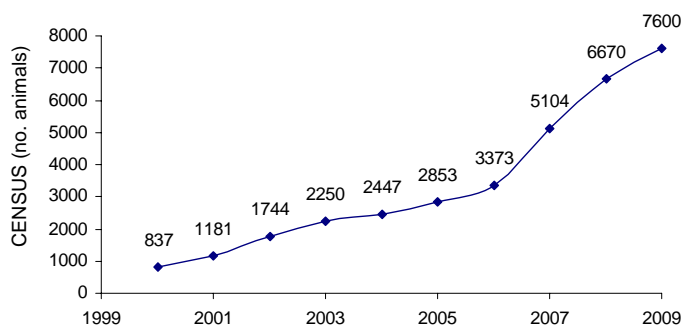


A. Sanz, J. Álvarez-Rodríguez, J. Folch, J.I. Martí, M. Joy, J.L. Alabart, J. H. Calvo
CITA - Gobierno de Aragón, Zaragoza, Spain (asanz@aragon.es)



CENSUS EVOLUTION AND FARMING SYSTEM

CHURRA TENSINA is a coarse-wooled hardy breed used for light lamb production in Spanish Pyrenees).



- ✓ **Flocks average size:** 182 animals (incomes complemented with other activities).
- ✓ **Feeding** based on grazing high mountain in summer and forest pastures and meadows the rest of the year.
- ✓ **Main lambing season** is spring, followed by autumn.
- ✓ **Commercial product** is a light lamb (20-25 kg live-weight).



MORPHOLOGICAL CHARACTERISATION

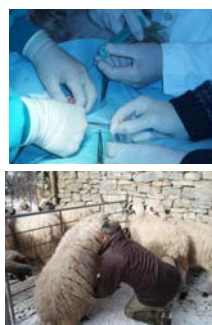


- ✓ **Study of zoometric variables** of the animals registered in ATURA (CHURRA TENSINA farmers association).
- ✓ **Homogeneous breed** with an evident sexual dimorphism.
- ✓ **A brevilineous, dolicocephalous and eumetric breed.**
- ✓ **Adult average live-weight:** ♂ 66.5 kg, ♀ 44.5 kg (CV: 14.5%).



GENETIC DIVERSITY AND RELATIONSHIP WITH OTHER BREEDS

- ✓ Thirty microsatellites proposed by FAO and ISAG for biodiversity studies have been used to characterize Churra Tensina, Churra, Churra Lebrijana and Latxa sheep breeds (n= 116, 60, 65 and 50, respectively).
- ✓ Churra Tensina breed showed good diversity values despite its low effective population size.
- ✓ The higher and lower Reynolds distances were between C.Tensina and C.Lebrijana, and C.Tensina and Latxa pairs, respectively.

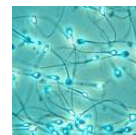


GERMPLASM BANKS

153 EMBRYOS, from 11 ♂ and 35 ♀

366 doses SEMEN, from 17 ♂

(Material from animals of different scrapie PRNP genotypes)



CARCASS AND MEAT QUALITY

- ✓ **Commercial viability** of the three slaughter live-weight prospected.
- ✓ **High quality products** for labelled lamb market.
- ✓ **Possibility of recovering traditional products** whose production had been abandoned.



9-12 kg 20-24 kg 28-35 kg