

Performances of Bruna dels Pirineus beef cattle breed in the mountainous areas of Catalonia



J. Piedrafita¹, M. Fina¹, J. Casellas², M. Orriols³, J. Tarrés¹

¹Grup de Recerca en Remugants, Departament de Ciència Animal i dels Aliments, Universitat Autònoma de Barcelona, 08193-Bellaterra, Barcelona, Spain.

²Genètica i Millora Animal, IRTA-Lleida, 25198 Lleida, Spain

³Federació Catalana de la Raça Bruna dels Pirineus, 25639 Gavet de la Conca, Lleida, Spain



Origin

Breeders from the Aran Valley imported animals from Switzerland around 1880.

The new population fused with and absorbed local cattle and later expanded to other Pyrenean and Prepyrenean areas of Catalonia.

Initially triple aptitude: draught, milk and meat.

More recent imports in the 60ths. Since the late seventies to the nineties empirically selected for beef aptitude.

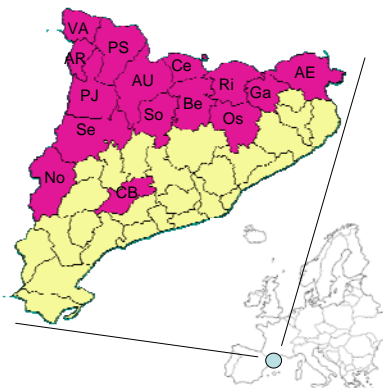
Racial standard

Uniform brown coat, darker in bulls. Horns short and hook-shaped.

Good muscular development of the shoulders, voluminous abdomen, well developed rump with horizontal profile.

Average weight of 550-600 kg for mature cows and higher than 1000 kg for mature bulls.

Geographical distribution and census

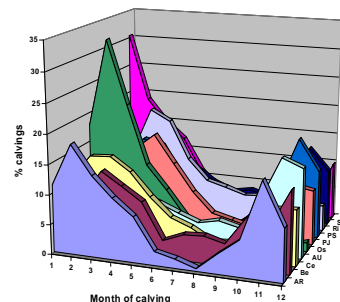


30000 cows

600 – 1200 m asl



Production system



Winter and spring calvings

Alpine and subalpine grasslands in summer (around 2000 m asl)

Grasslands around the farm

Stocking rate < 1 LU/AA

Maternal aptitudes

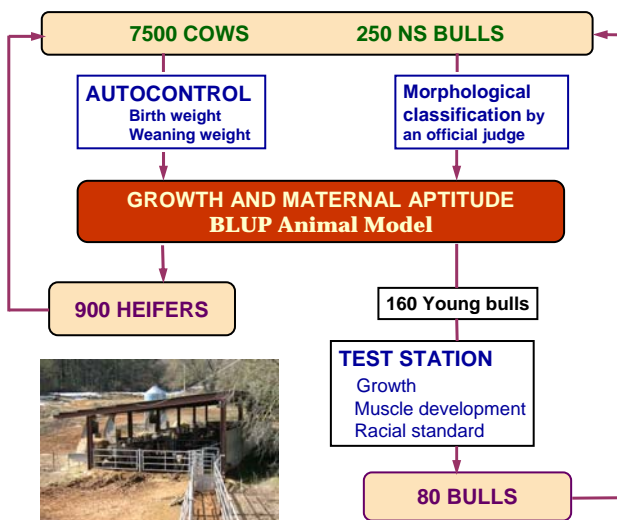
	Males	Females
Birth weight (kg)	45.4	42.1
Calving without assistance or light assistance by the farmer (%)	91.7	96.3
Calving with strong assistance by the farmer (%)	5.8	2.8
Calving with veterinary assistance or caesarean (%)	2.4	0.8
Weaning weight (kg)	227.1	216.7
Weaning age (days)	177.0	186.9
Calf mortality until weaning (%)	3.1	
Age at first calving (months)	33.5	
Calving interval (months)	13	
Longevity (years)	9	

Production and carcass traits

	Males
Age at slaughter (days)	380.6
Slaughter weight (kg)	541.6
Average daily gain during fattening (kg/day)	1.63
Carcass weight (kg)	329.0
Hot carcass yield (%)	60.7
Carcass conformation	11.2 (U)
Carcass fatness	6.7
Carcass composition (dissection of 6th rib)	
Muscle (%)	68.2
Bone (%)	16.3
Subcutaneous fat (%)	3.0
Intermuscular fat (%)	9.7

FAIR1 CT95 0702

Breeding program



Acknowledgement: The Yield Recording program is being supported by the *Departament d'Agricultura, Alimentació i Acció Rural de la Generalitat de Catalunya*; breeders of FEBRUPÍ (*Federació Catalana de la Raça Bruna dels Pirineus*) have recorded the information.