

Spanish specially-protected autochthonous breed Black Morucha

S. Alvarez Sánchez-Arjona¹, J.M Sánchez Recio²

¹Universidad de Salamanca. Filiberto Villalobos 119. 37007. Salamanca. Spain. salvarez@usal.es ²Asociación

Nacional de Criadores de Ganado Vacuno de Raza Morucha Selecta. Santa Clara 20. 37001 Salamanca. Spain

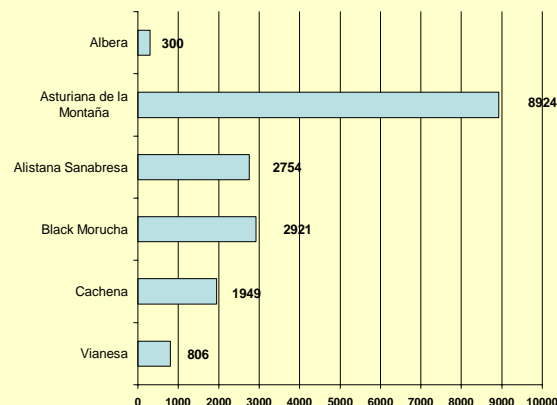
Autochthonous breed from Salamanca, in central western Spain. Originally, suitable for work, bullfight and meat. Nowadays for **meat**.

Production area of Morucha



Adult females **weight** about 450-550 kg, males 700-900 kg. Two varieties distinguished by their **colour**: one of them is grey (*cárdena*) and it is a promoted breed; the other one is black.

Some other protected Spanish breeds: Number of cows



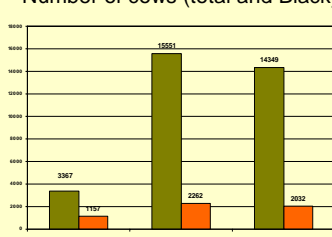
Main characteristic of Morucha: **ability to live integrated in its environment**, *dehesa*, Spanish wooded rangelands, pastures with *Quercus* trees. Extensive production system is used in farming: cows are grazing all over the year, no stabling is used. Environmentally friendly system.

High fertility, no problem at giving birth and **very good maternal characteristics**. **High longevity**: 14-16 years in production on average.

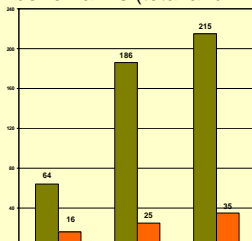
CENSUS IN 2008	Black	All Morucha
Number of animals in official Genealogical Registers	2921 (17%)	16736 (100%)
Reproductive females	2032	14349
Reproductive males	32	176
Number of farms	35 (16%)	215 (100%)
Farm size (heads, average)	83	78
Animals out of official Genealogical Registers	560	42945

Data from Association of Morucha breeders for *cárdena* and Black animals were used for this work

Number of cows (total and Black)



Number of farms (total and Black)



Black census is increasing, but whole Morucha is decreasing



Some conservation and improvement activities

1971	Association of Morucha breeders (<i>Asociación Macional de Criadores de Ganado Vacuno de Raza Morucha Selecta</i>) was created in order to preserve, improve and promote the breed.
1974	Beginning of Genealogical Register
1993	Morucha selection program begins
1996	Reg. (CE) 1107/96, PGI <i>Carne de Morucha de Salamanca</i> (Salamanca's Morucha Meat)
2007	Black Morucha was officially recognized and included in Official Catalogue of Livestock Breeds.
2008	Black Morucha conservation program