

# HORSE BREEDING IN LITHUANIA

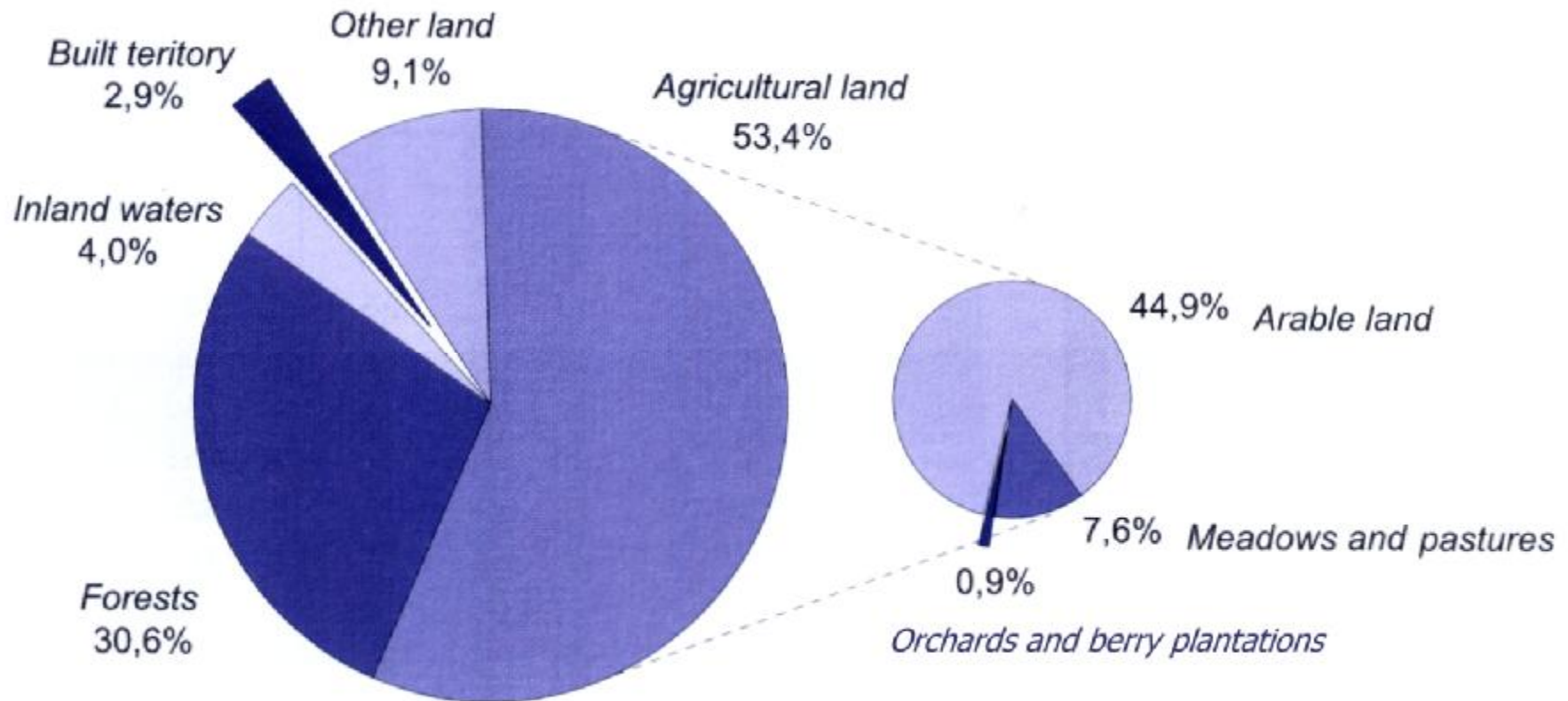


R. Šveistienė

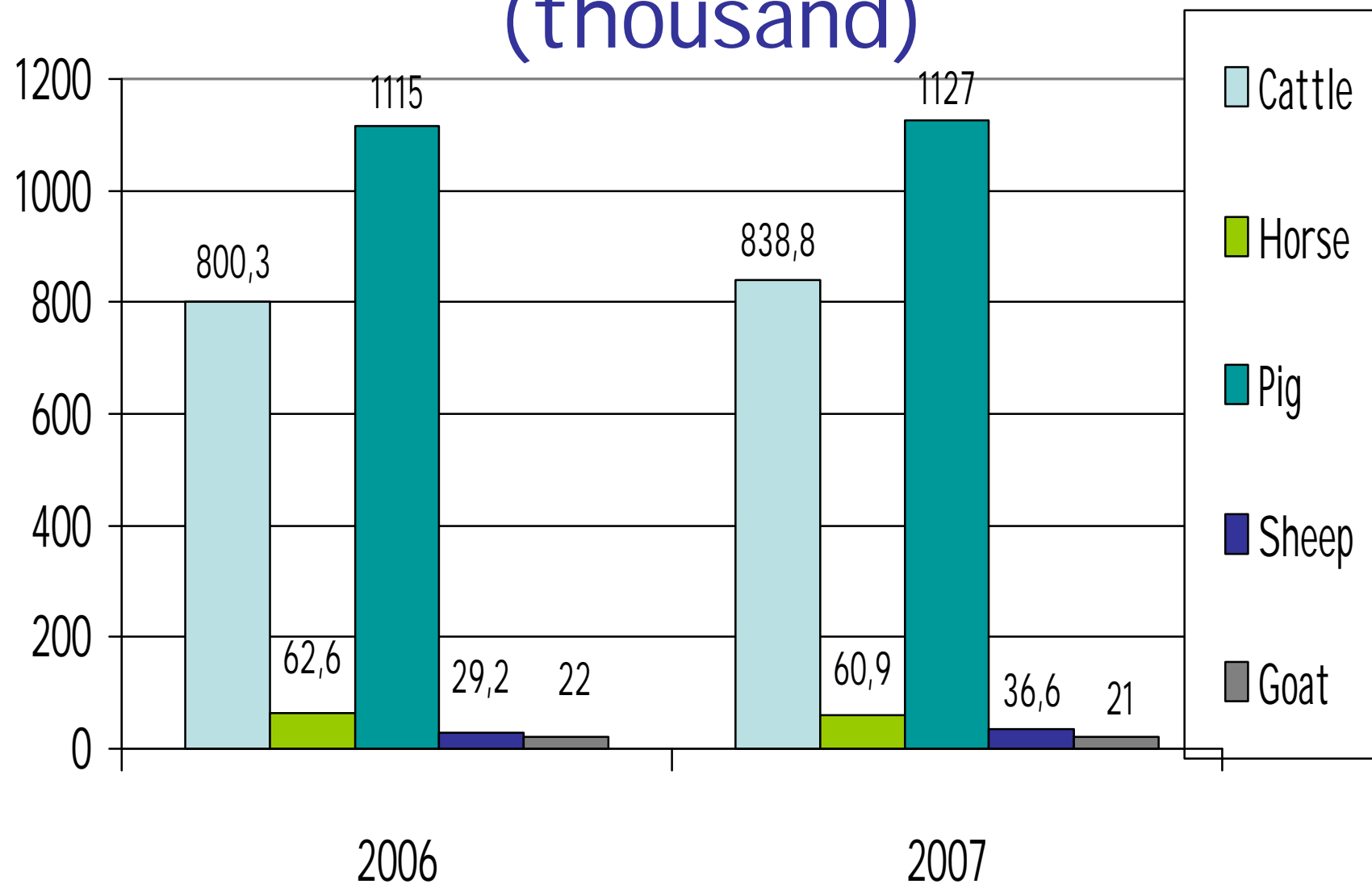
E-mail: [ruta@lgi.lt](mailto:ruta@lgi.lt)

*Institute of Animal Science of Lithuanian Veterinary Academy*

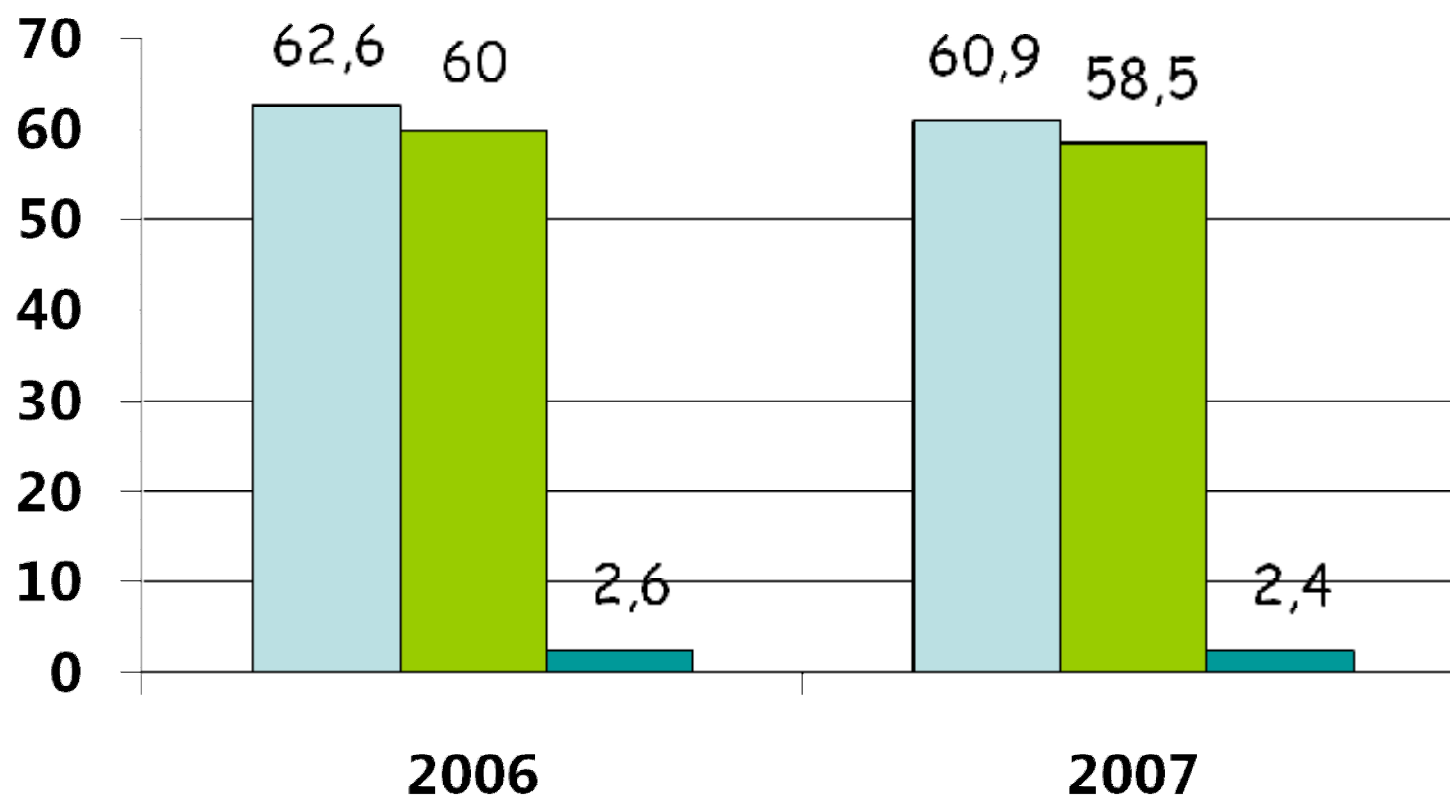
# TOTAL LAND AREA BY LAND CATEGORIES (%)



# Number of farm animals (thousand)

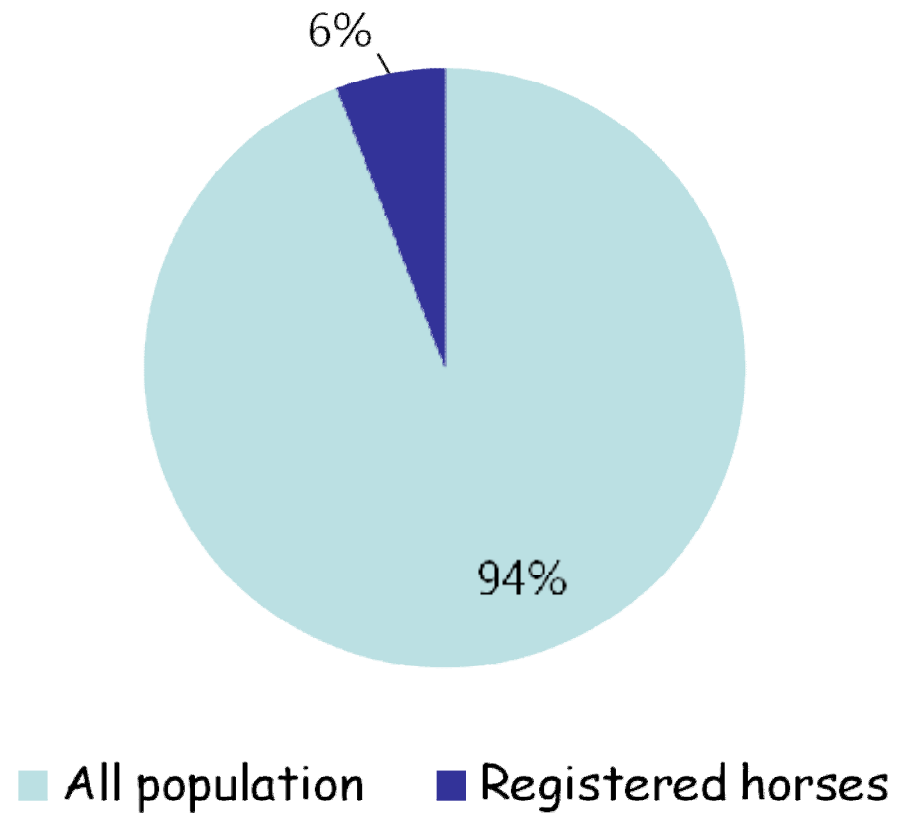
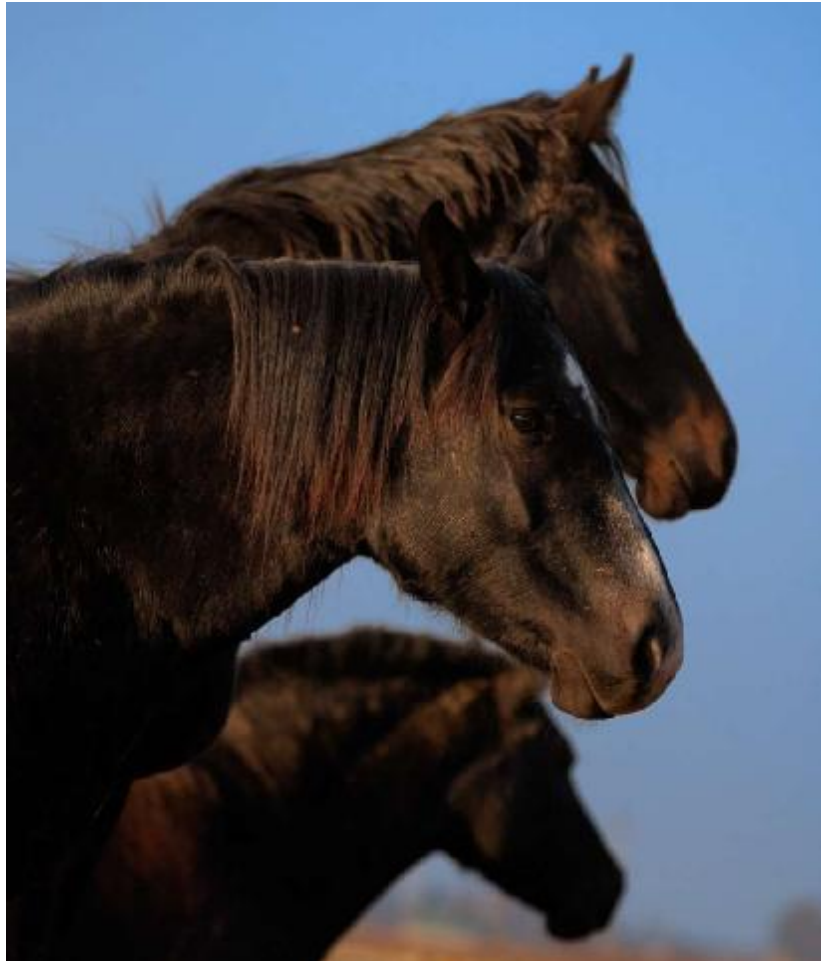


# Number of horses in farms (thousand)

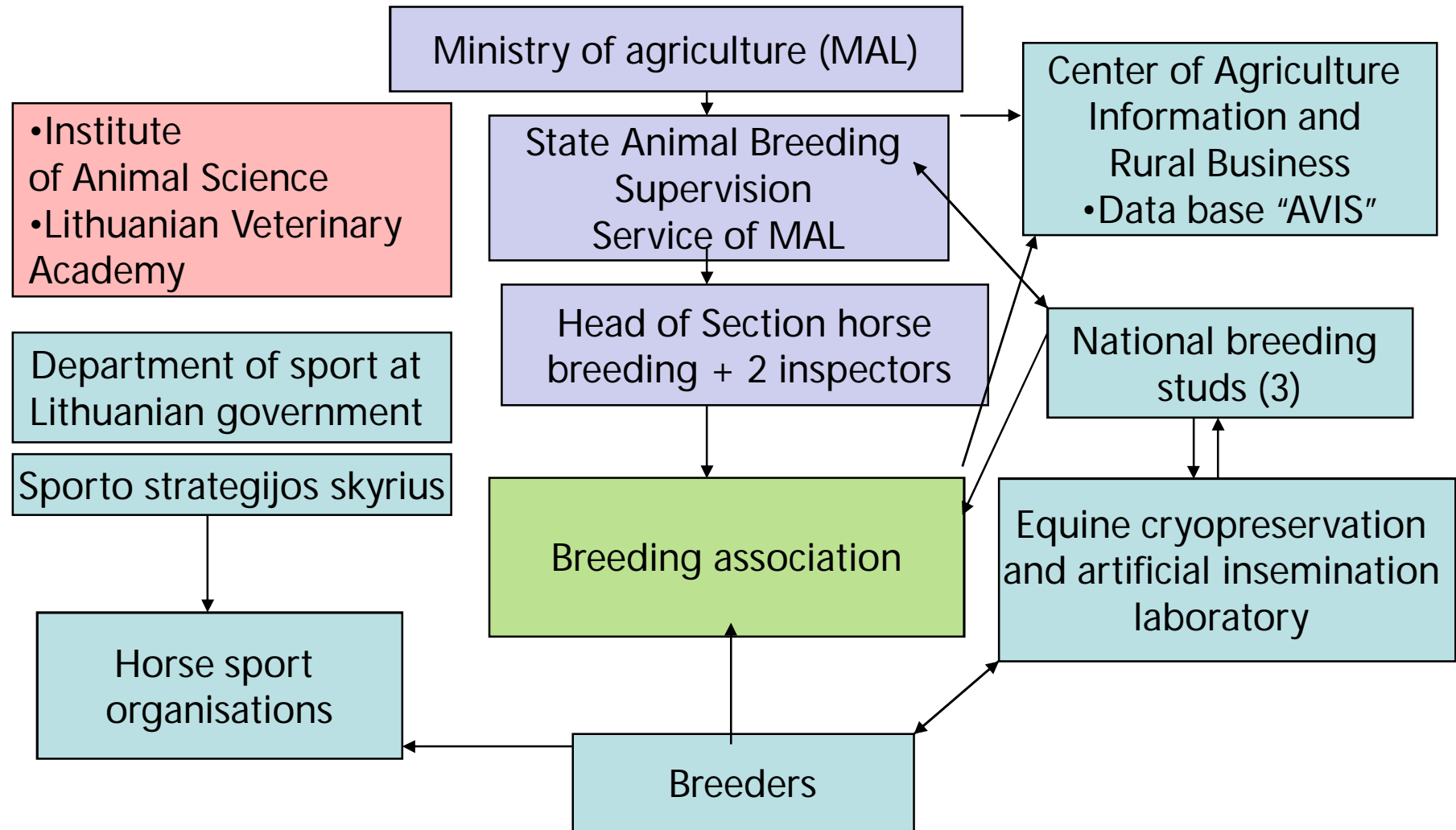


■ In all farms ■ In farmers' and family farms ■ In agricultural companies and enterprises

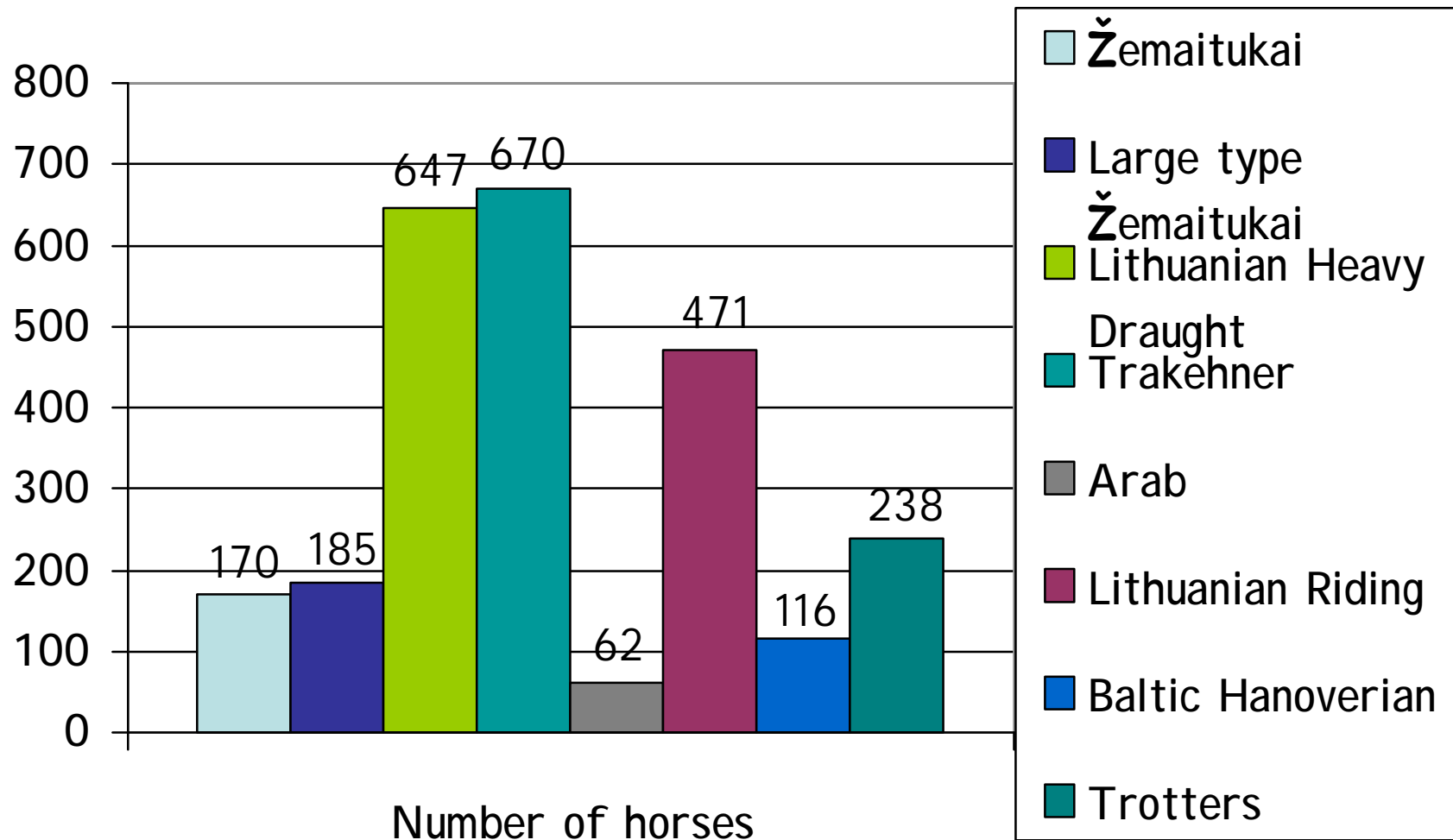
## Number of horses in Lithuania (55900)



# General management of horses in Lithuania



# Lithuanian horse breeds



# Breeding associations in Lithuania:

- Lithuanian Horse Breeders Association (1993) – Arabian stud book (till 2007), Lithuanian Riding horse stud book, Large-type Žemaitukai stud book (till 2003), Lithuanian Heavy draught stud book (till 2003)
- Žemaitukai Horse Breeders 'Association (1997)  
- Žemaitukai stud book
- Lithuanian Draft Horse Breeders 'Association (2003) - Large-type Žemaitukai stud book, Lithuanian Heavy draught stud book
- Lithuanian Trakehner 'Association (1993, 2000) – Trakehner stud book (2001)



# Breeding associations in Lithuania:

- Baltic Hanover horses Breeders Association – Baltic hanovers stud book
- National Trotters sport Association (2006) – Orlov and French trotters stud book
- Republic Racing Horse League (1999) – sport organisation / trotters stud book (2002)
- National Racing horse club – sport organisation / thoroughbred stud book (2007)
- Lithuanian Equestrian Association – sport organisation

# Effective population size ( $N_e$ )

$$N_e = 4N_mN_f / (N_m + N_f),$$

where:  $N_m$  – number of breeding males;  $N_f$  – number of breeding females

Žemaitukai

- $N_e = 66$



Large type  
Žemaitukai

- $N_e = 42$

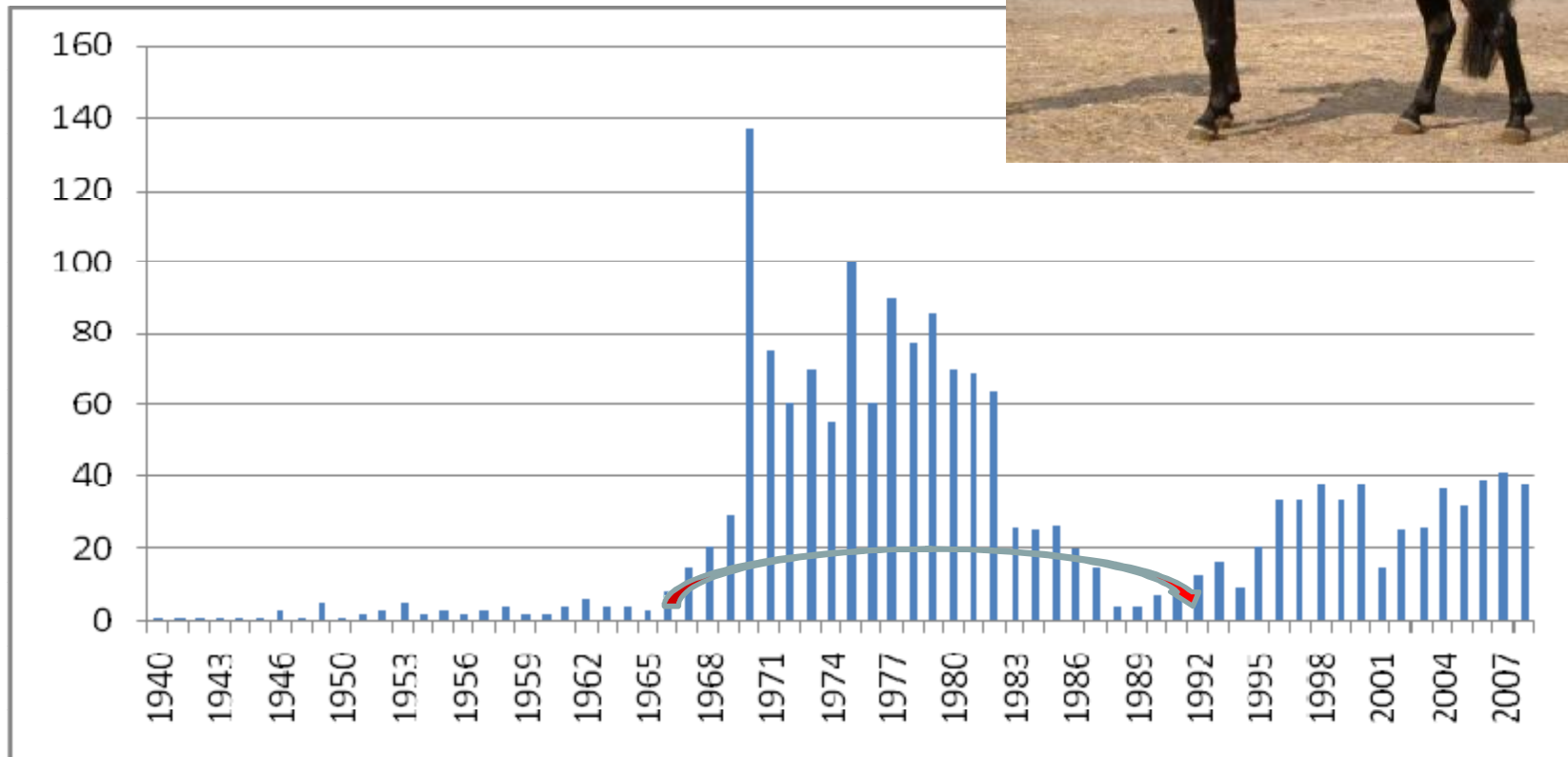
Lithuanian Heavy  
Draught

- $N_e = 126$



# Numbers of foals of the Žemaitukai

(Centre of Agriculture Information and Rural Business)



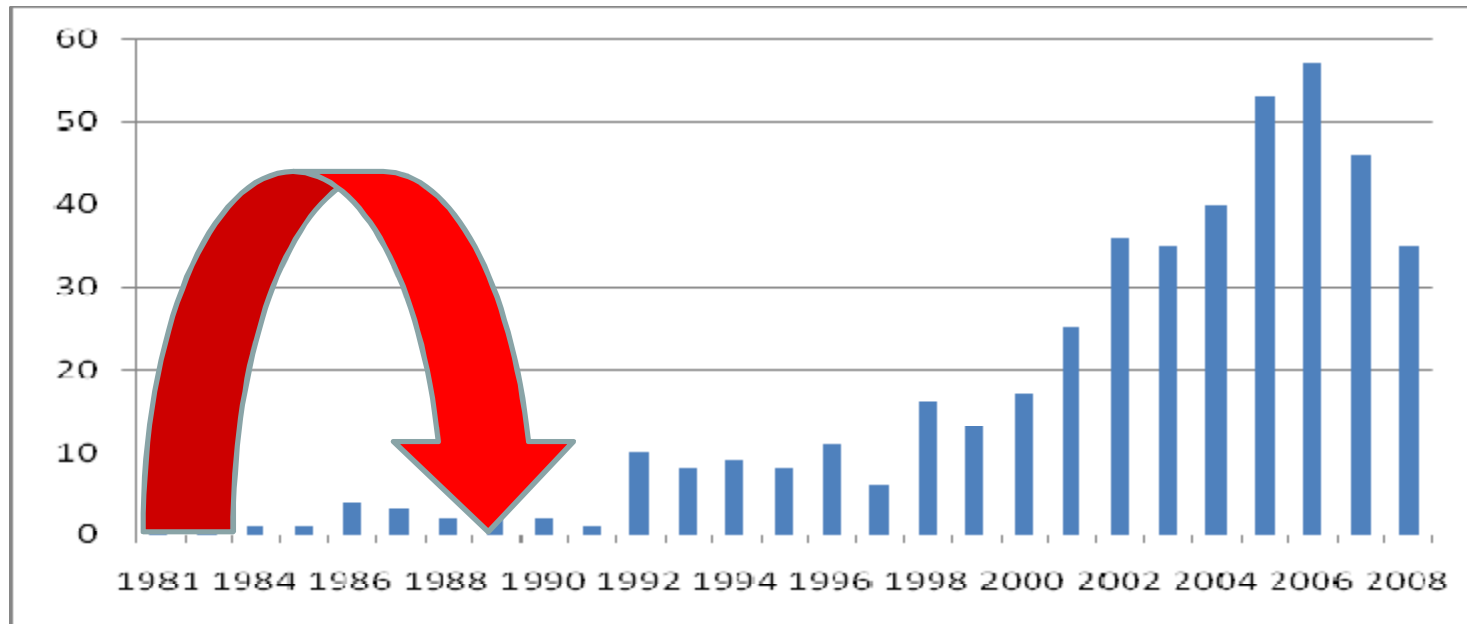
## Using for Žemaitukai

- show jumping,
- flat racing,
- carriage riding,
- long-distance riding and other forms of entertainment
- for breeding (within the population)
- on a family farm as an all-purpose horse





## Numbers of foals of the large type Žemaitukai





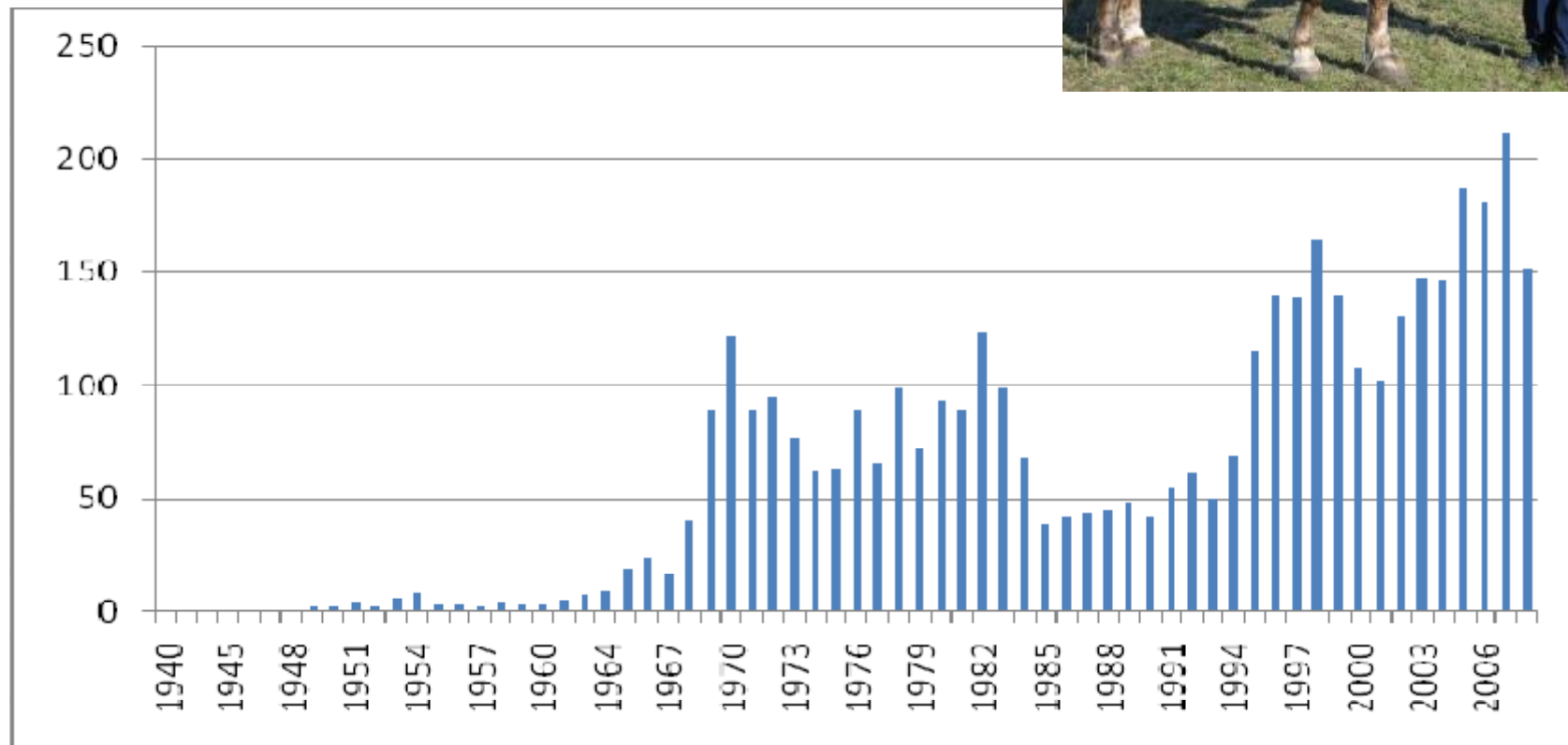
# Using for Large-Type Žemaitukai

- for breeding (within the population)
- on a family farm as an all-purpose horse
- in tourism
- for carriage driving
- in marathons
- in national parks, museums and schools



# Numbers of foals of the Lithuanian Heavy Draught

(Centre of Agriculture Information and Rural Business)



# Using of Lithuanian Heavy Draught horses

- Breeding
- The meat production
- Work
- Maintenance of environmental areas
- Skidding

More respect of nature

Easier access to difficult grounds

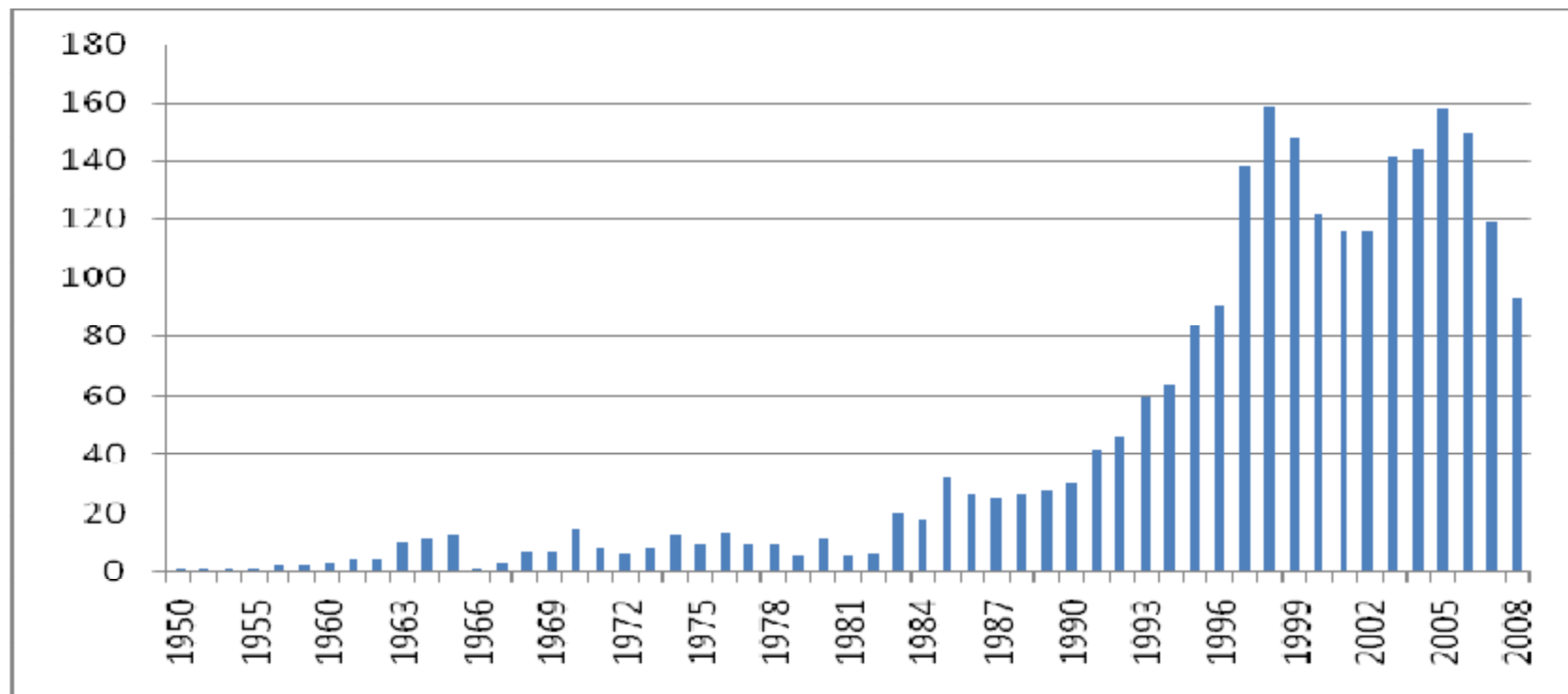






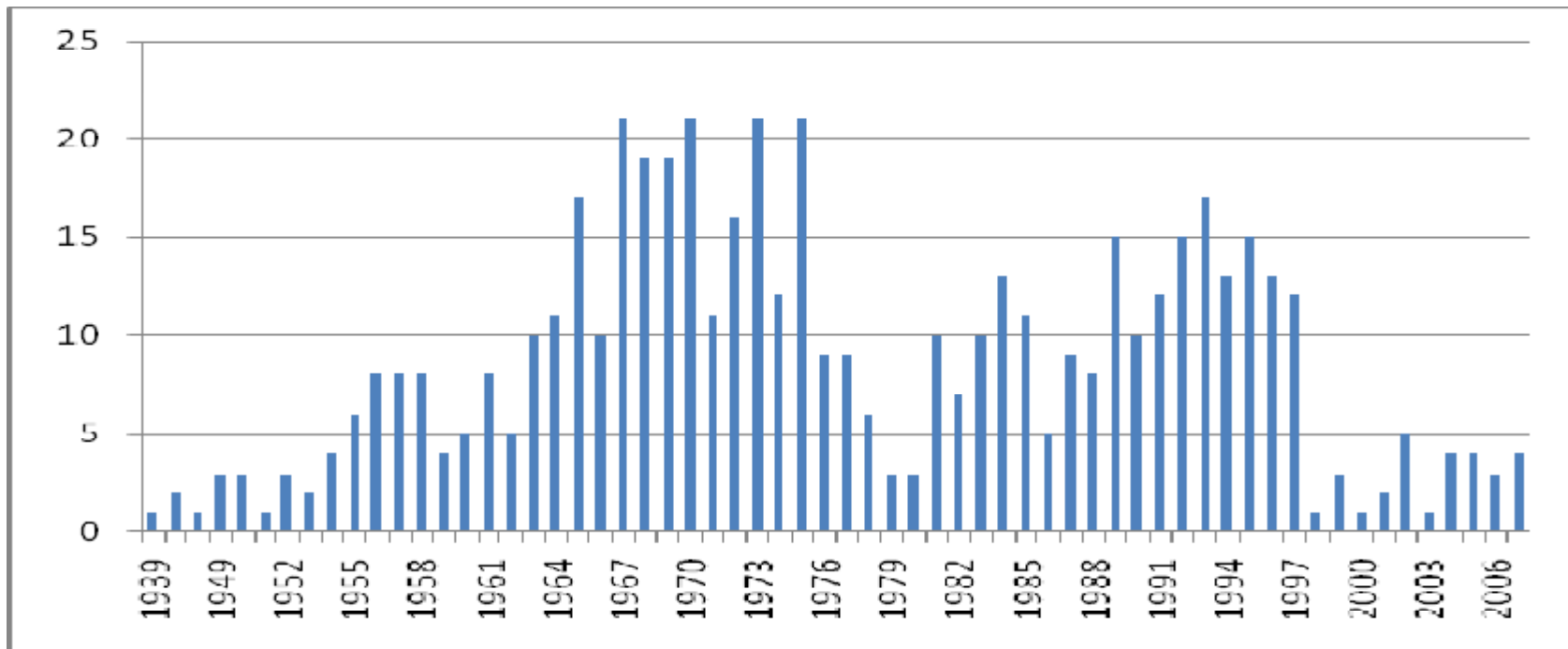
# Numbers of foals of the Trakehner

(Centre of Agriculture Information and Rural Business)



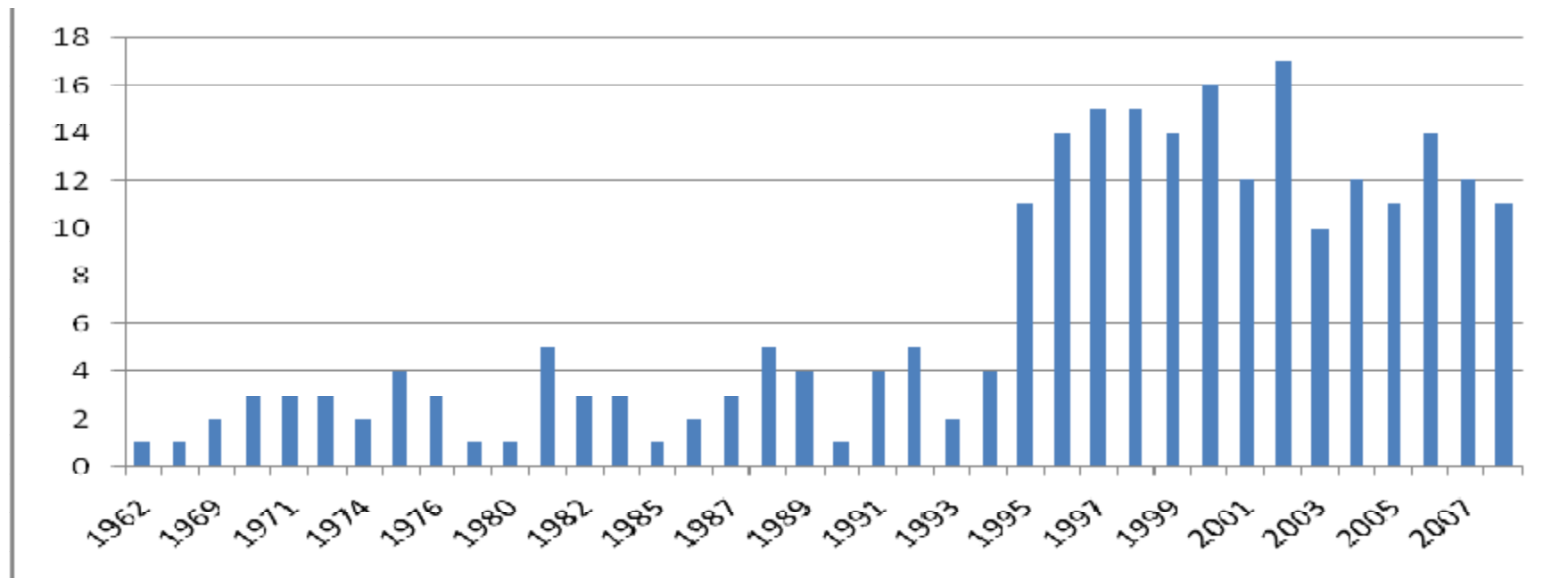
# Numbers of foals of the Thoroughbred

(Centre of Agriculture Information and Rural Business)

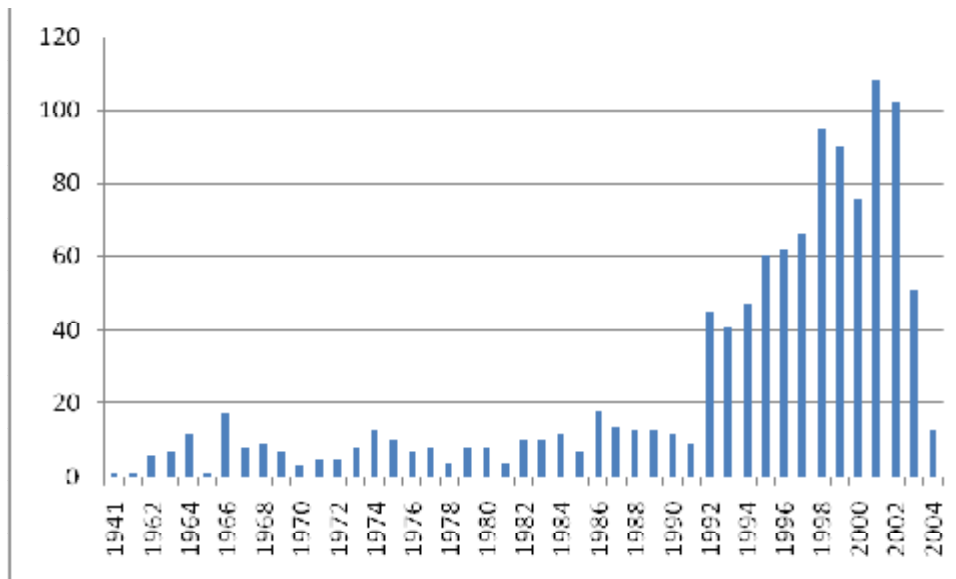


# Numbers of foals of the Arab

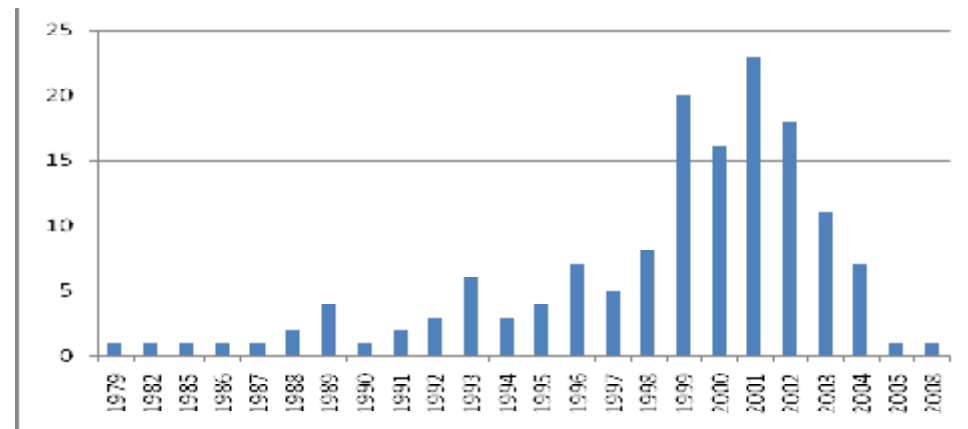
(Centre of Agriculture Information and Rural Business)



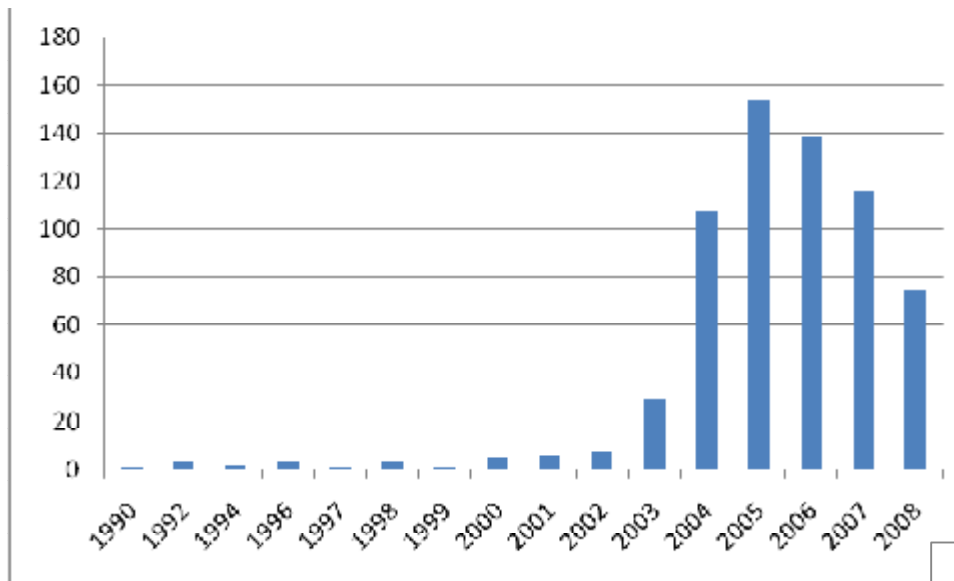
## Numbers of foals of the Hanoverien



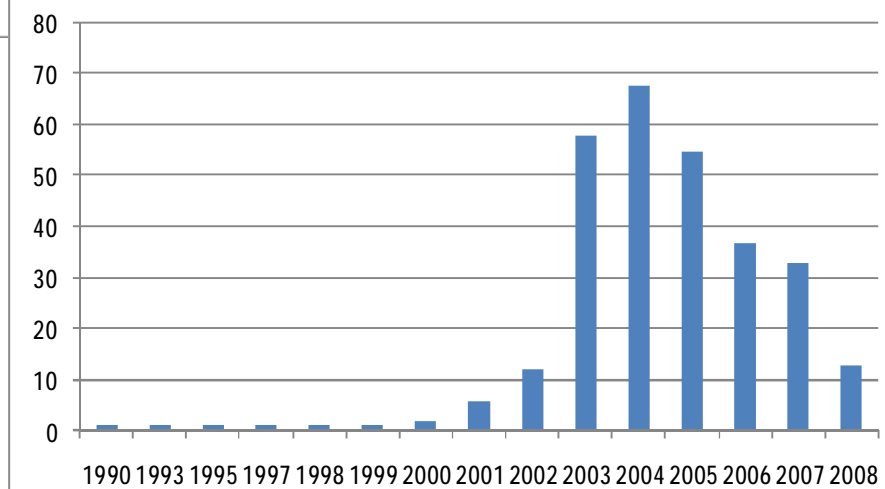
## Numbers of foals of the Holstein



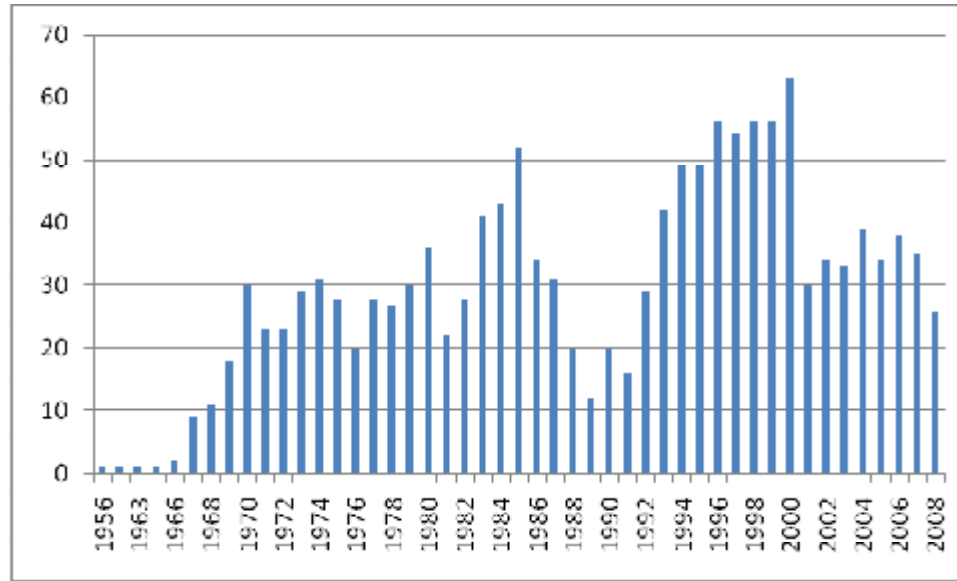
## Numbers of foals of the Lithuanian saddle



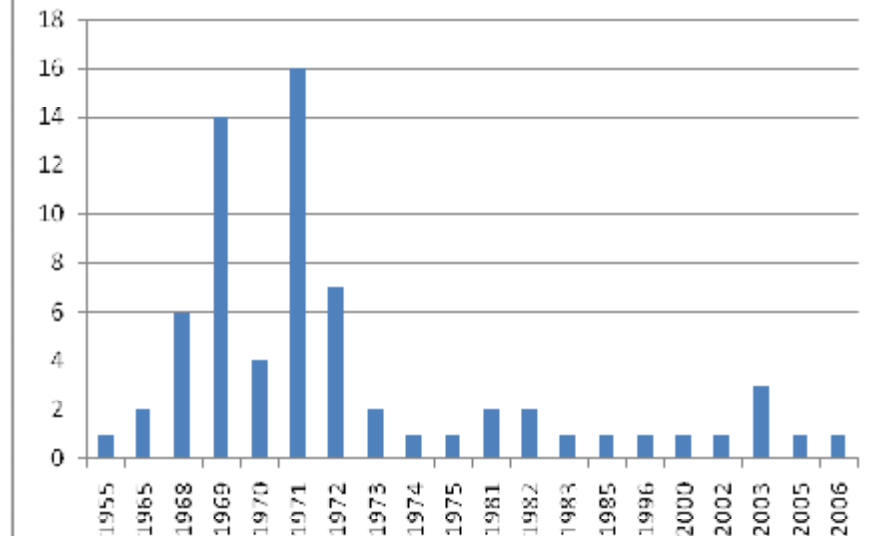
## Numbers of foals of the Baltic Hanoverien



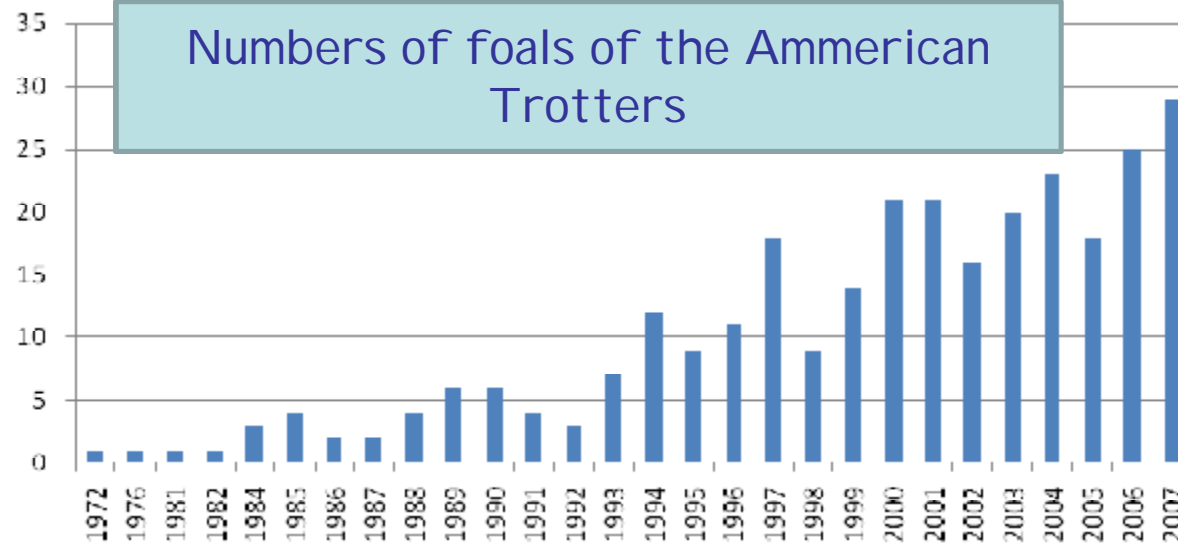
## Numbers of foals of the Russian Trotters



## Numbers of foals of the Orlov Trotters

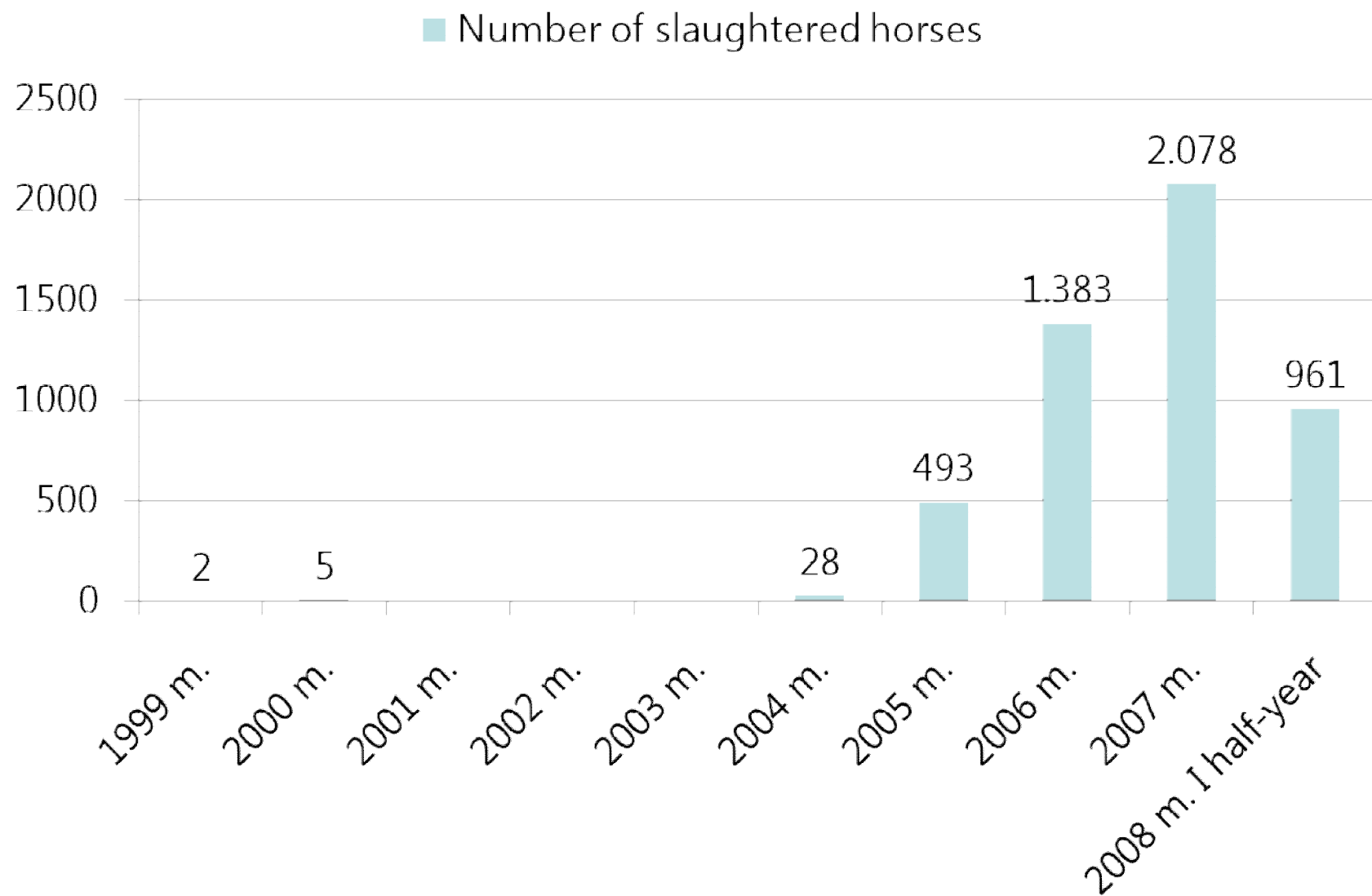


## Numbers of foals of the Ammerican Trotters



# Export and Import of horses







## Distribution of breeds in farms

Breed	National studs	Accredited breeding farms	National studs, %
Žemaitukai	82	170	48
Large type Žemaitukai	130	185	70
Lithuanian Heavy Draught	46	647	7
Trakehner	534	670	80
Thoroughbred	5	15	25
Arab	65	62	51
Trotters	47	238	20
Lithuanian Saddle	-	471	-
Baltic Hanoverian	-	116	-

## National support for horse breeding

Subsidies for specific tasks for National breeding studs	44,4%
Development of Breeding technology	20,6%
Subsidies for horse performance tests	14%
Subsidies for horse evaluation	6,7%
Subsidies for purchase of breeding stallions in national depot	4,7%
Subsidies for National cryopreservation laboratory	2.9%
Getting foals in breeding farms	1.4%
Subsidies for horse show (exhibition)	0,6%
Subsidies for stud books	0,18%

## Subsidies committed to the horse competition

State Animal  
Breeding  
Supervision  
Service

60,5 %

Department of  
sport at  
Lithuanian  
government

39,5 %

# Science in Equine

Lithuanian Veterinary  
Academy

Research in field on:

- Veterinary medicine,
- Anatomy and archeology
- Genetic

Institute of Animal Science of  
LVA

Science focus on:

- General issues in horse breeding problems (population research)
- Investigation of genetic factors influence on production performance and quality, workability of horses.
- Measuring reproduction of biology.
- Institute perform parentage testing for horses.

# Conclusion

- The native breeds need action plans for search for wider use and possibilities of their introduction into the general breeding scheme of corresponding animal species.
- With the aim to adopt genetic evaluation for sport horses in Lithuania the Sport and Breeding Associations need action plans for close collaboration.

Thank you for  
your attention

