



Animal and economic performances for large French cattle herds

session L31.3

Veysset P., Lherm M., Bébin D.

Unité Économie de l'Élevage INRA Theix, 63122 Saint Genés Champanelle, France

veysset@clermont.inra.fr

Introduction

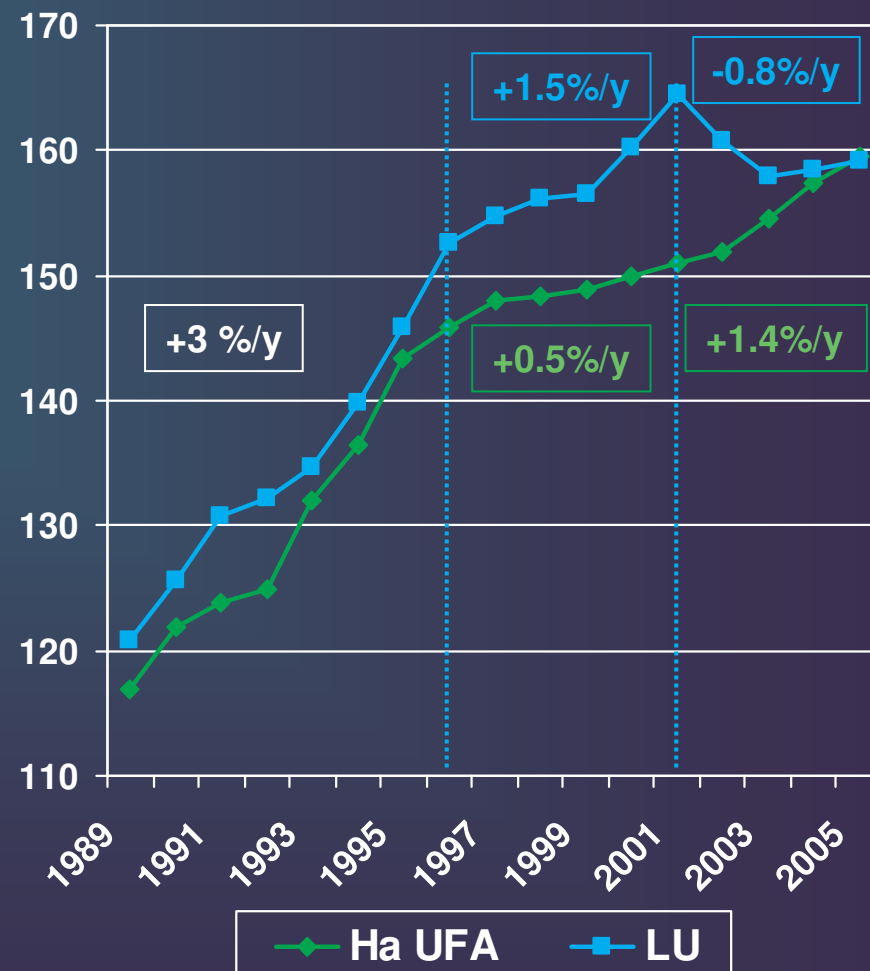
- French professional cattle farms from 1990 to 2004 (FADN):
 - Useable Farm Area = +35% (57 → 77 ha)
 - Livestock Units = +42% (62 → 88 LU)
 - Annual Work Units: =
- Herds size and animal performances?
Economic results?

Sample

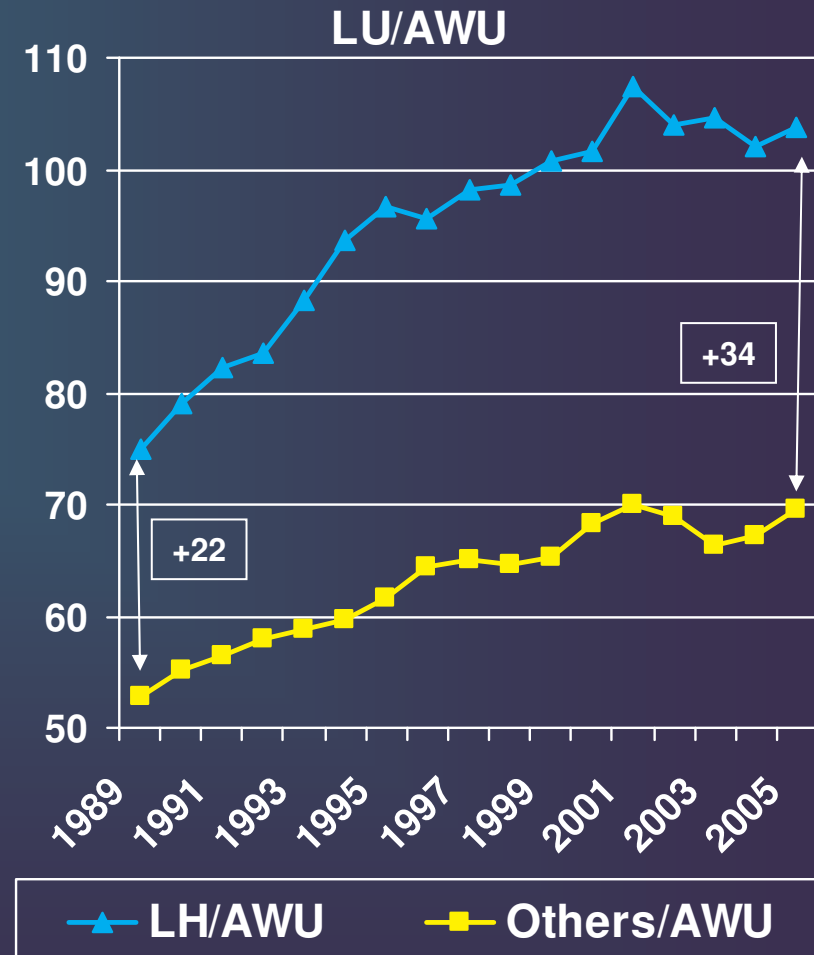
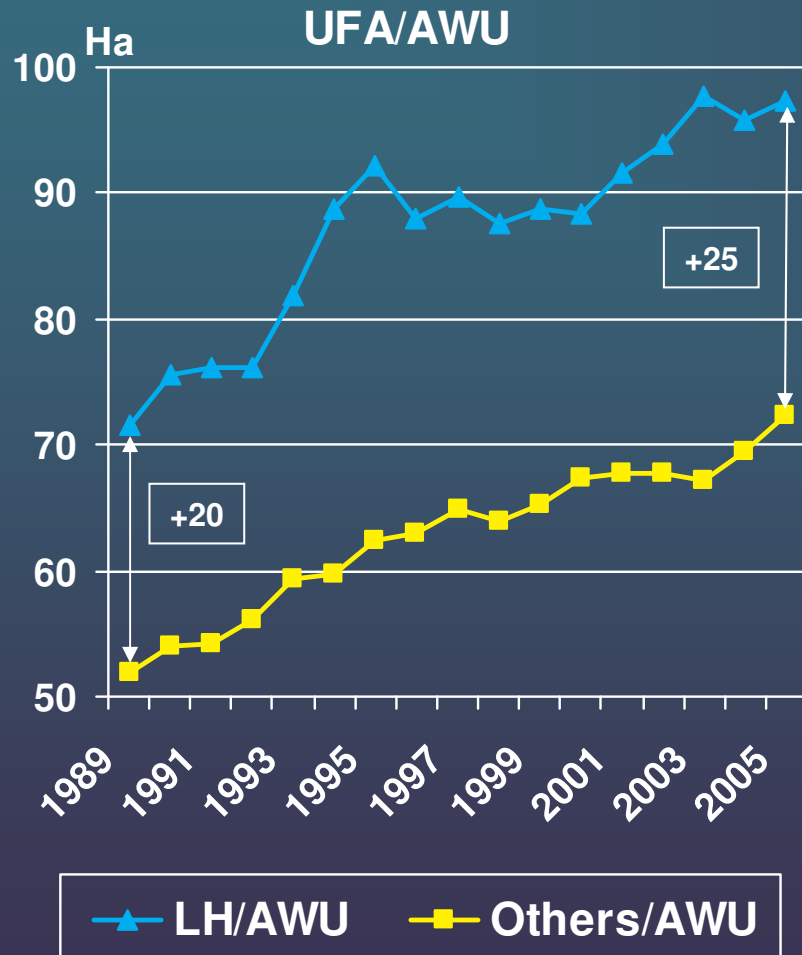
- 65 farms, constant group from a suckler cattle Charolais farms network.
- Changes over 17 years (1989 to 2005) for 2 identified groups: "LH" and "Others"
- "LH": higher quartile of the sample for Livestock Units/AWU = 16 farms
- "Others" = 49 farms

65 farms 1989-2005

	1989	2005	Evol. %
AWU	2.07	2.05	- 1
UFA (ha)	116.9	159.5	+ 37
% Fodder	80.0	81.1	+ 1
Stocking rate	1.30	1.22	- 7
Calvings	65.4	93.7	+ 43
LU	120.8	159.2	+ 32
LU / AWU	58.3	77.9	+ 34



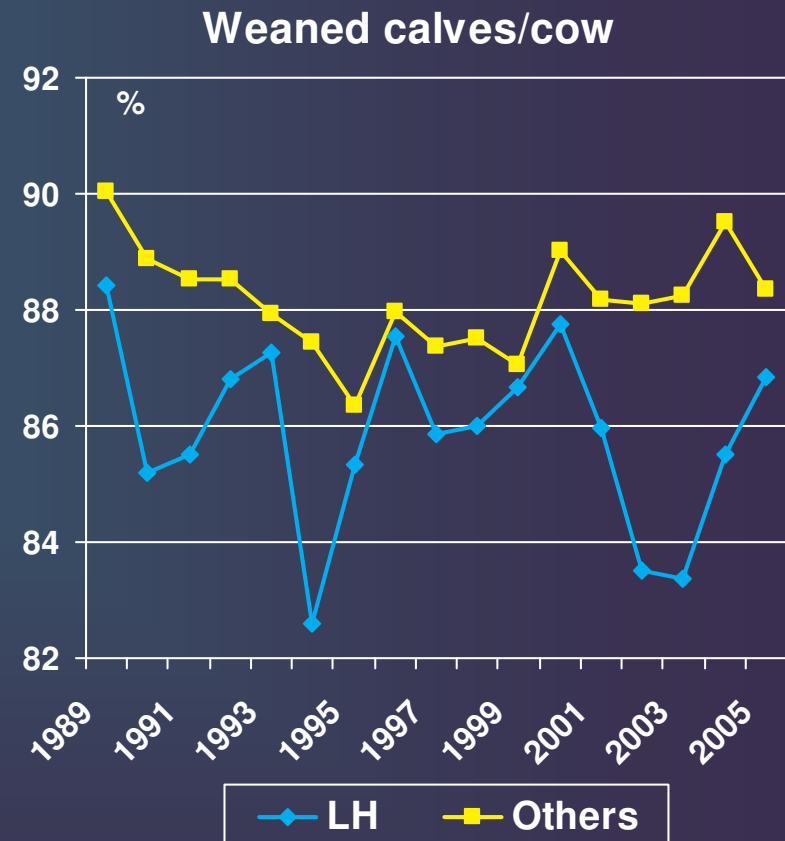
Structures LH and Others



Numerical productivity

	LH	Others
Pregnancy rate	92.8	93.4 *
Calves mortality	10.4	8.2 *
Numerical Prod.	85.9	88.2 *
Calving interval	378.3	378.4 ns

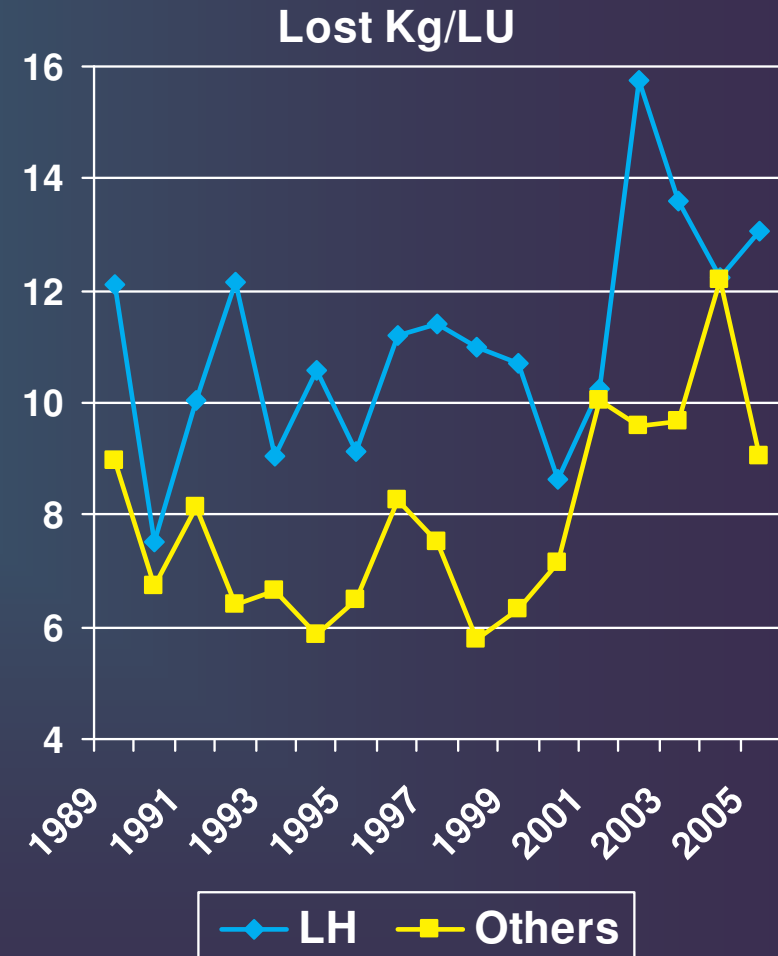
**Numerical productivity
significantly lower
for LH**



Weight productivity (1)

	LH	Others
Lost Kg/LU	11.1	7.9 *
LU/Cow	1.83	1.76 *
Live Weight Kg/LU	308	306 ns

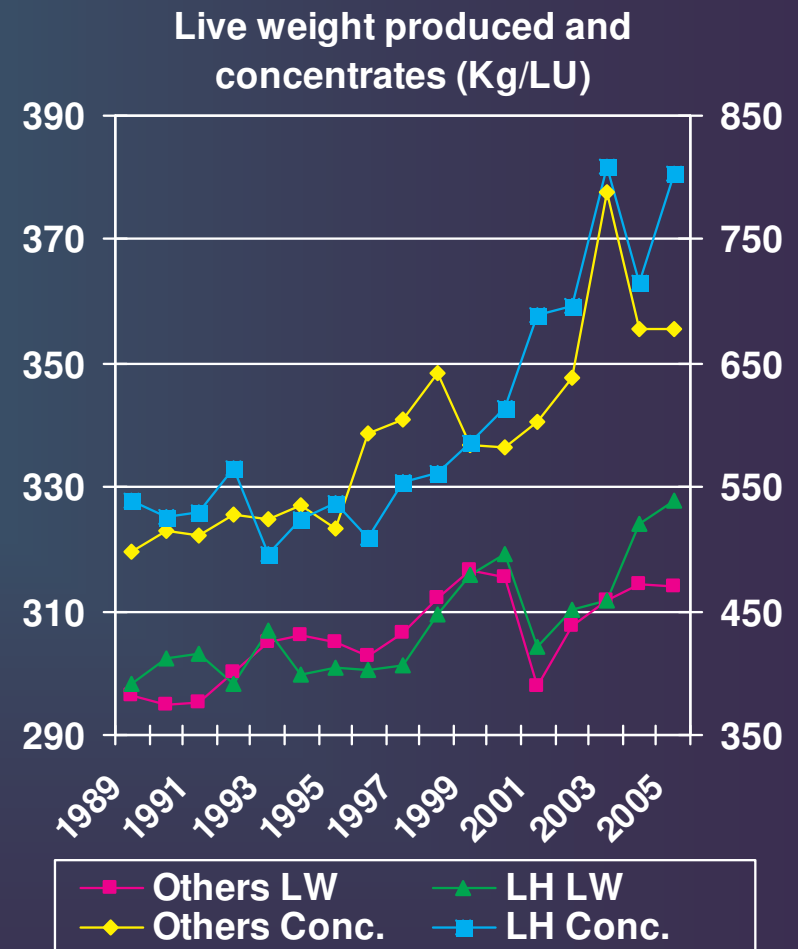
LH lost more kg
(mortality) than Others,
but they fatten more
animals (longer
production cycles)



Weight productivity (2)

	LH	Others
Live Weight Kg/LU	308	306 ^{ns}
Concentrates Kg/LU	603	589 ^{ns}
Kg Conc./Kg LW	1.96	1.92 ^{ns}

No difference for live weight production and concentrates distribution between LH and Others

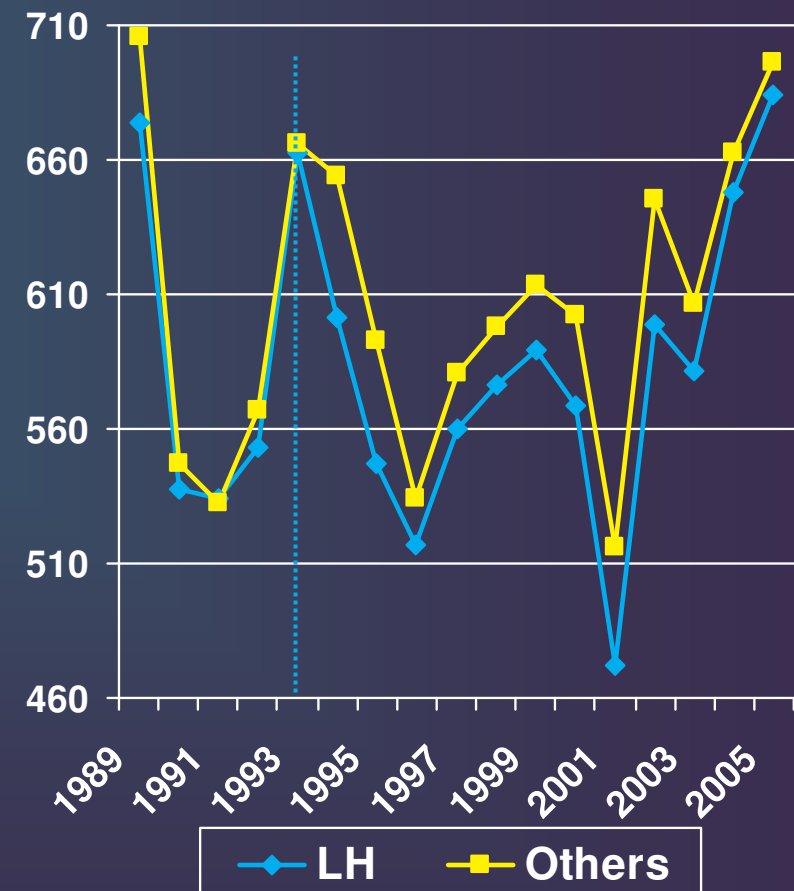


Bovine gross margin

	LH	Others
Product €/LU	842	866 *
Subsidies €/LU	185	199 *
Costs €/LU	259	259 ns
Gross margin €/LU	583	607 *

LH: more non-premium
eligible cows
=> less product
=> gross margin – 4.0 %

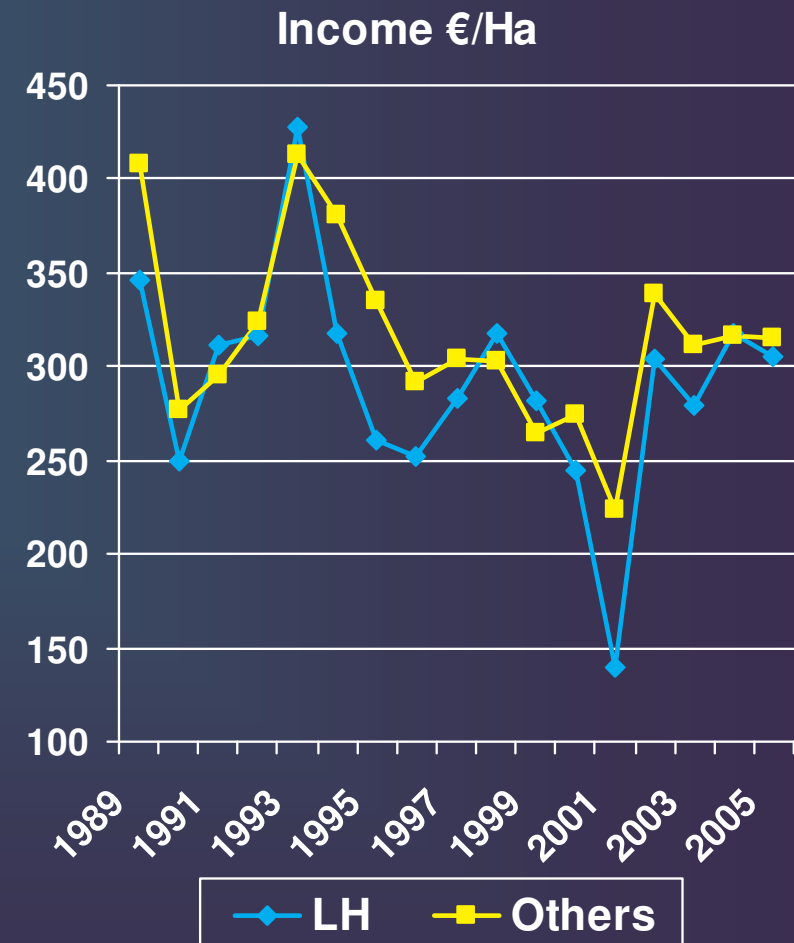
Bovine gross margin €/LU



Farm income per hectare

	LH	Others
Product €/Ha	1 121	1 184 *
Costs €/Ha	848	851 ns
Income €/Ha	292	316 *

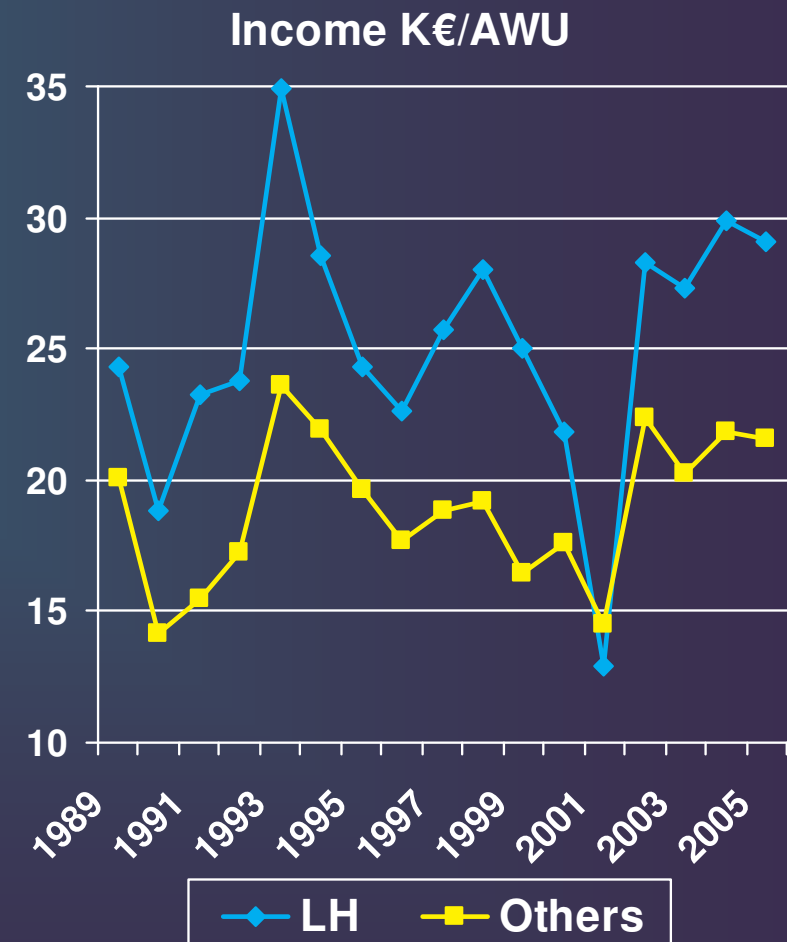
Less product / Ha
Same costs / Ha
=> Income / Ha lower for LH



Farm income per worker

	LH	Others
Income €/Ha	292	316 *
Ha/AWU	87	63 *
Income K€/AWU	25.2	19.0 *

Less income / Ha
More Ha / AWU
=> Income / AWU higher



Income out of subsidies

	LH	Others
Subsidies K€/AWU	27.8	21.6 *
Income out of subsidies K€/AWU	- 2.5	- 2.7 ns

Correlation LU/AWU and
income out of subsidies / AWU

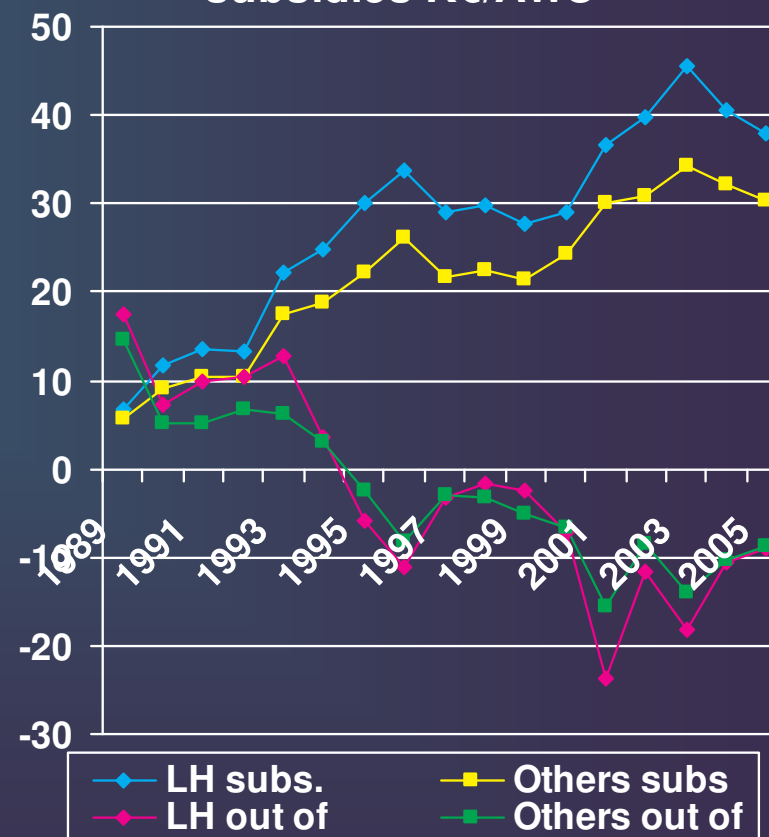
< 1994

0.25

1994>

-0.10

Income out of subsidies and
subsidies K€/AWU



Conclusions (1)

- From 2001 to 2003: 1st drop in the herd size since 1971.
- LH's productivity (calves, live weight) and gross margin slightly but significantly lower.

Conclusions (2)

- LH's farm income per worker is higher thanks to the subsidies (administrative reason) and not thanks to the kg of meat produced (technical reason)
- Impacts of the new CAP reform (decoupling)?
 - Increase in cows number?
 - Place of the technical and economic management in the overall business strategy of the farms?